

# Rear Two-Storey

## ENHANCED END UNIT

# NORTHSIDE

GUELPH

### UNIT DETAILS

2 BEDROOM

2 BATHROOM

2 BALCONIES

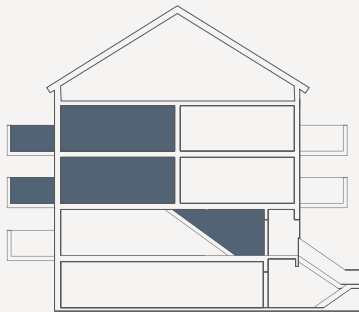
### LIVING SPACE

INTERIOR 1,152 SQ. FT.

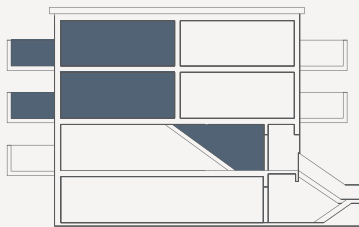
EXTERIOR 126 SQ. FT.

**TOTAL 1,278 SQ. FT.**

### UNIT LOCATION



BLOCK A | B | C | D | E

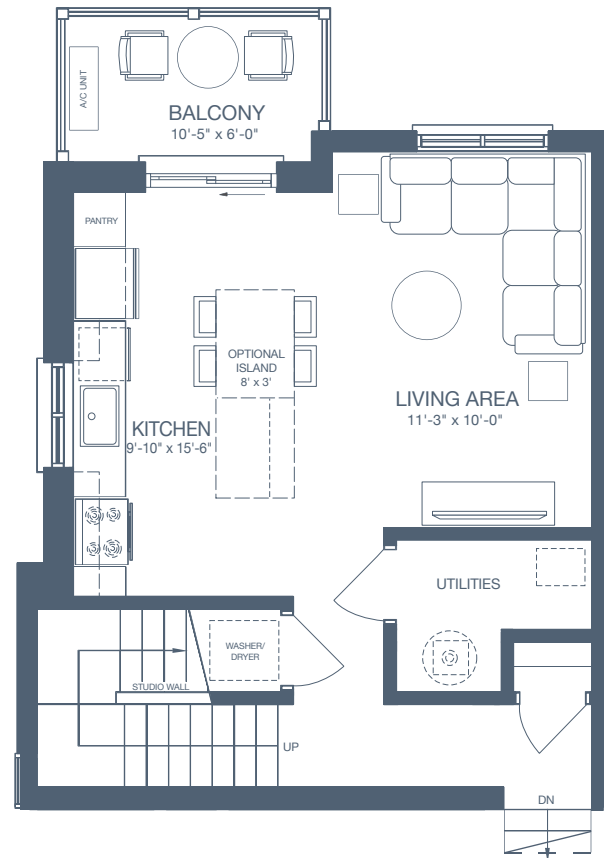


BLOCK F | G

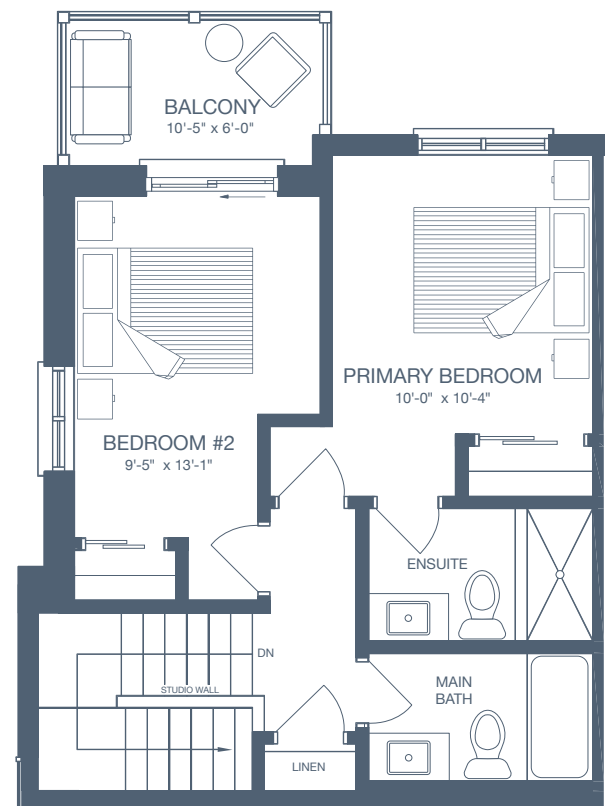


All drawings are an artist's concept and may vary slightly from the final product. E. & O.E. Actual usable floor space may vary from stated area, and square footage has been calculated based on usable living space according to the Tarion rules. Drawings may show optional features which may not be included in the base price. Bulkheads and box outs may be required as chases for plumbing and mechanical. Location of mechanical room equipment will be located by the builder and may change based on plan. Number of steps in front entry may vary based on grade.

[GRANITEHOMES.CA](http://GRANITEHOMES.CA)



SECOND LEVEL



THIRD LEVEL