

118 Harrison St., Elora - Lot 75

SQ.FT. 3,037

Bedrooms:
4

Bathrooms:
2.5



50' Walk-Out
\$1,490,990

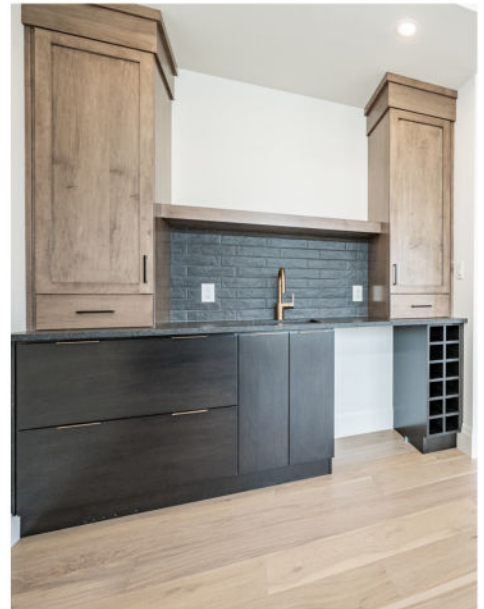
SOUTH  RIVER



Your Designer Home Awaits

MOVE-IN READY

Expertly designed and curated by our Interior Design Team at Granite Homes, this home comes with the benefits of quick occupancy, a functional floor plan and premium features and finishes.



Features

MAIN FLOOR

- Side entrance from exterior to garage
- Glass stair railings throughout
- Hardwood flooring throughout main floor
- Hardwood stairs to second floor
- Gas fireplace
- Wet bar with built-in cabinetry
- 8' Interior doors
- Custom kitchen and pantry with built-ins
- Upgraded waterfall quartz island in kitchen
- Upgraded lighting fixtures including pot lights
- Luxury appliance package including wall oven
- Finished basement stairs and vestibule

SECOND FLOOR

- Hardwood floors throughout upper hallway
- Custom laundry room with cabinetry
- Spa-inspired ensuite with soaker tub

EXTERIOR

- Walk-out basement
- Side entrance from exterior to garage
- Gas line for bbq
- 12' Patio slider in kitchen and basement
- Park views
- Stone knee wall

CLOSING

- 30 Day Closing

***MANY MORE UPGRADES**

OVER \$300,000 IN ADDED INVESTMENTS

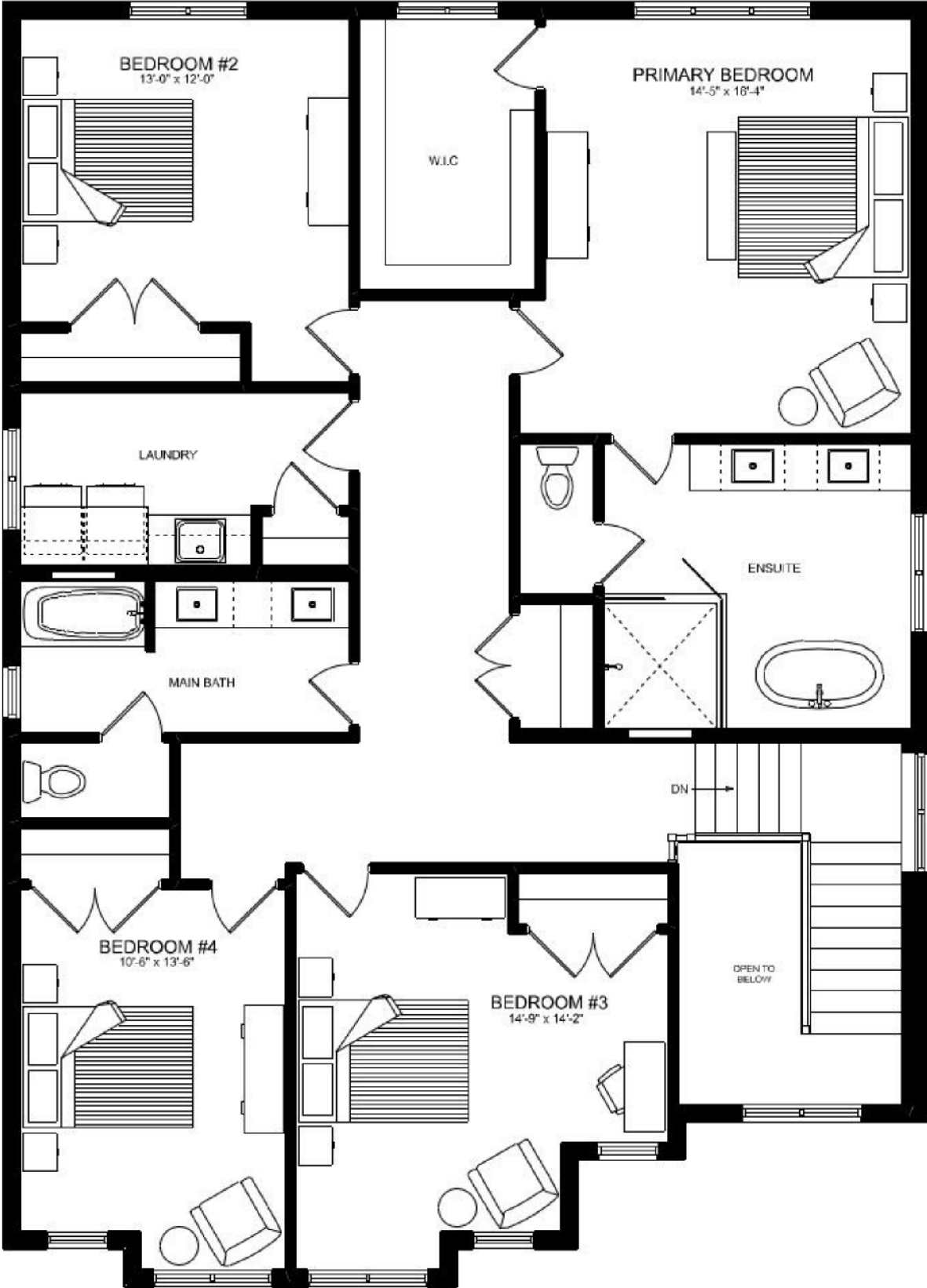
Floor Plans

MAIN FLOOR



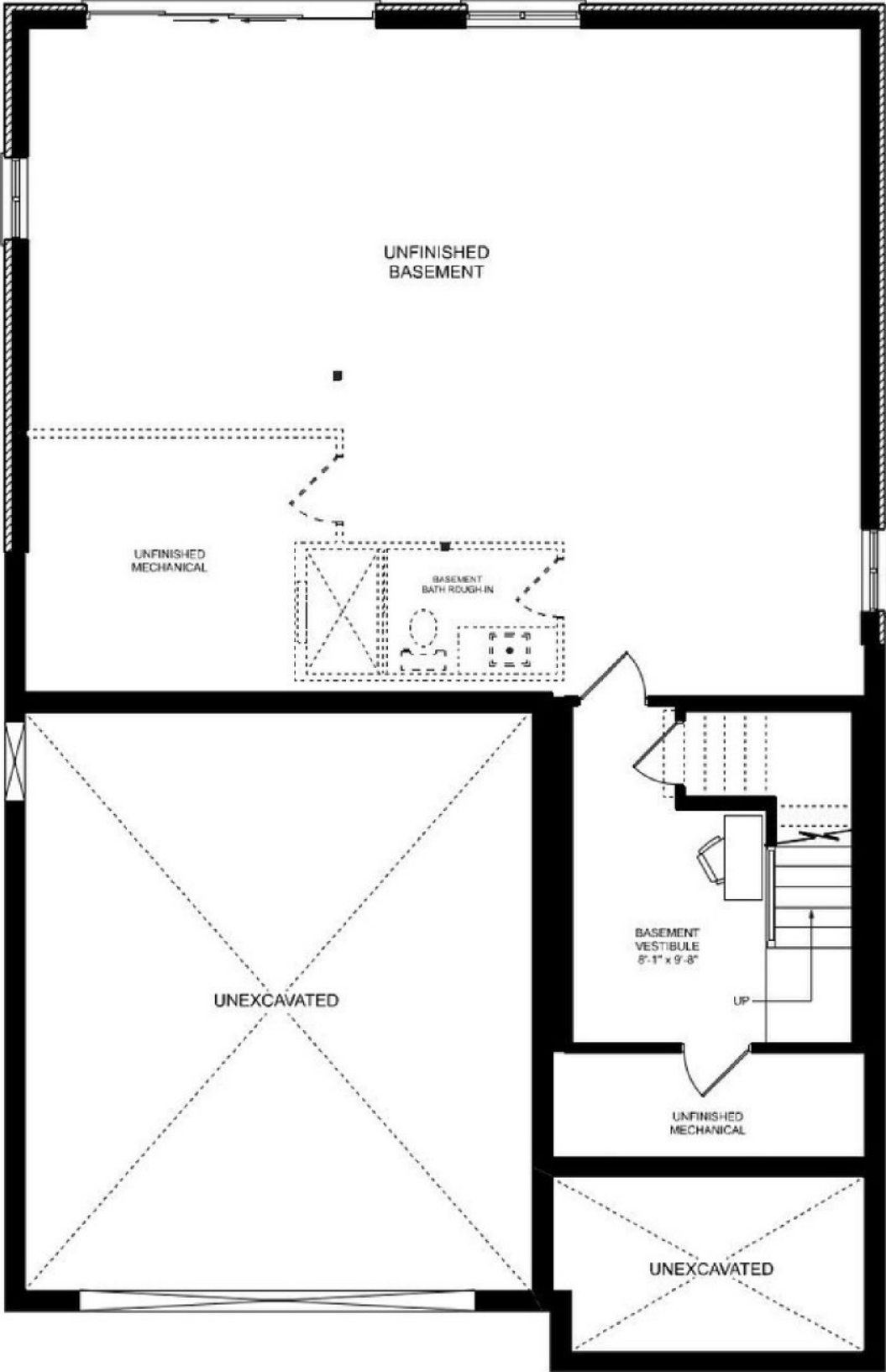
Floor Plans

SECOND FLOOR



Floor Plans

BASEMENT



South River Site Plan



Designer Homes provide the benefits of a new home, without the wait.

SANDRA AVEIRO

519.222.3988

sales@granitehomes.ca

BUILT BY:

