

118 Harrison St., Elora - Lot 75

SQ.FT. 3,037

Bedrooms:
4

Bathrooms:
2.5



2024 GDHBA winner for the Most Outstanding
Production Home Design (over 40' lot)

50' Walk-Out

\$1,490,990

SOUTH  RIVER



Your Designer Home Awaits

MOVE-IN READY

Expertly designed and curated by our Interior Design Team at Granite Homes, this home comes with the benefits of quick occupancy, a functional floor plan and premium features and finishes.



Features

MAIN FLOOR

- Side entrance from exterior to garage
- Glass stair railings throughout
- Hardwood flooring throughout main floor
- Hardwood stairs to second floor
- Gas fireplace
- Wet bar with built-in cabinetry
- 8' Interior doors
- Custom kitchen and pantry with built-ins
- Upgraded waterfall quartz island in kitchen
- Upgraded lighting fixtures including pot lights
- Luxury appliance package including wall oven
- Finished basement stairs and vestibule

SECOND FLOOR

- Hardwood floors throughout upper hallway
- Custom laundry room with cabinetry
- Spa-inspired ensuite with soaker tub

EXTERIOR

- Walk-out basement
- Side entrance from exterior to garage
- Gas line for bbq
- 12' Patio slider in kitchen and basement
- Park views
- Stone knee wall

CLOSING

- 30 Day Closing



OVER \$300,000 IN ADDED INVESTMENTS

***MANY MORE UPGRADES**

Winner of the 2024 GDHBA Award of Distinction for the Most Outstanding Production Home Design (over 40' lot)

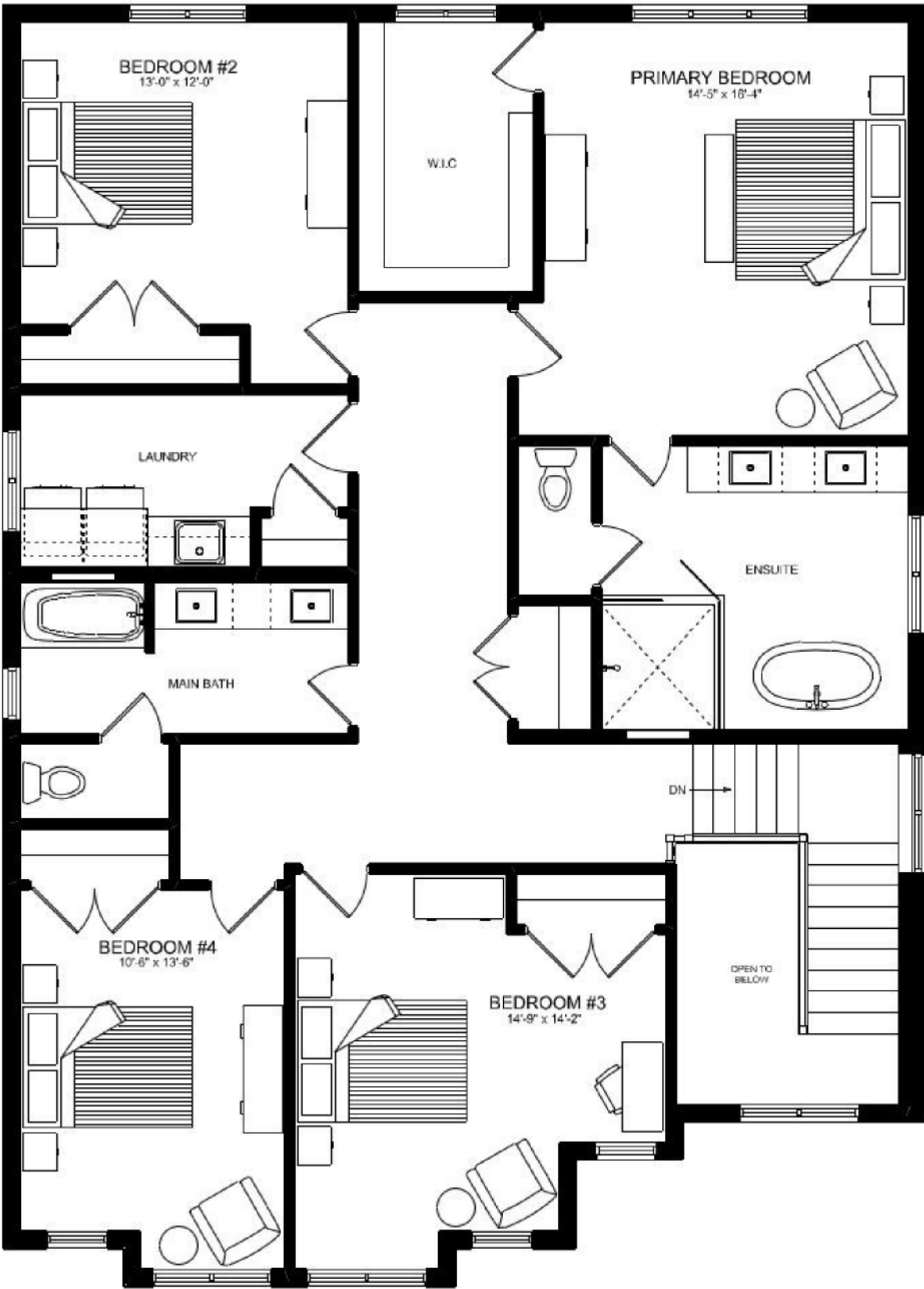
Floor Plan

MAIN FLOOR



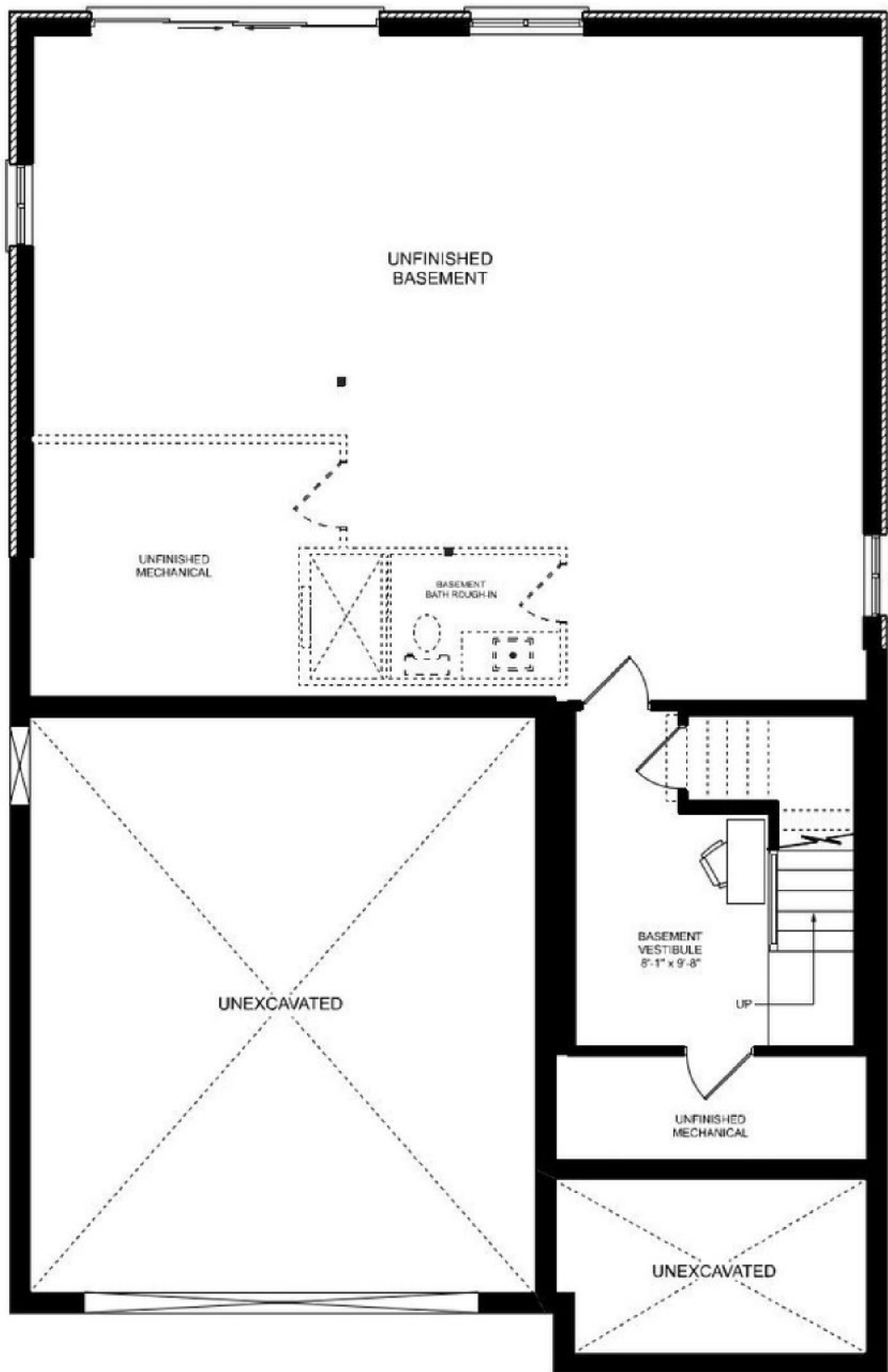
Floor Plan

SECOND FLOOR



Floor Plan

BASEMENT



South River Site Plan



Designer Homes provide the benefits of a new home, without the wait.

SANDRA AVEIRO

519.222.3988

sales@granitehomes.ca

BUILT BY:

