

MOVE-IN READY MODEL HOME

56 Hedley Lane, Elora - Unit 23

Sq. Ft.
1,734

Bedrooms:
3

Bathrooms:
2 Full + 2 Half



Corner Unit + Finished Basement + Patio

2024 GDHBA winner for the Most Outstanding Attached Multi-Unit Home

\$949,990



Your Designer Home Awaits

MOVE-IN READY

Expertly designed and curated by our Interior Design Team at Granite Homes, this home comes with the benefits of quick occupancy, a functional floor plan and premium features and finishes.

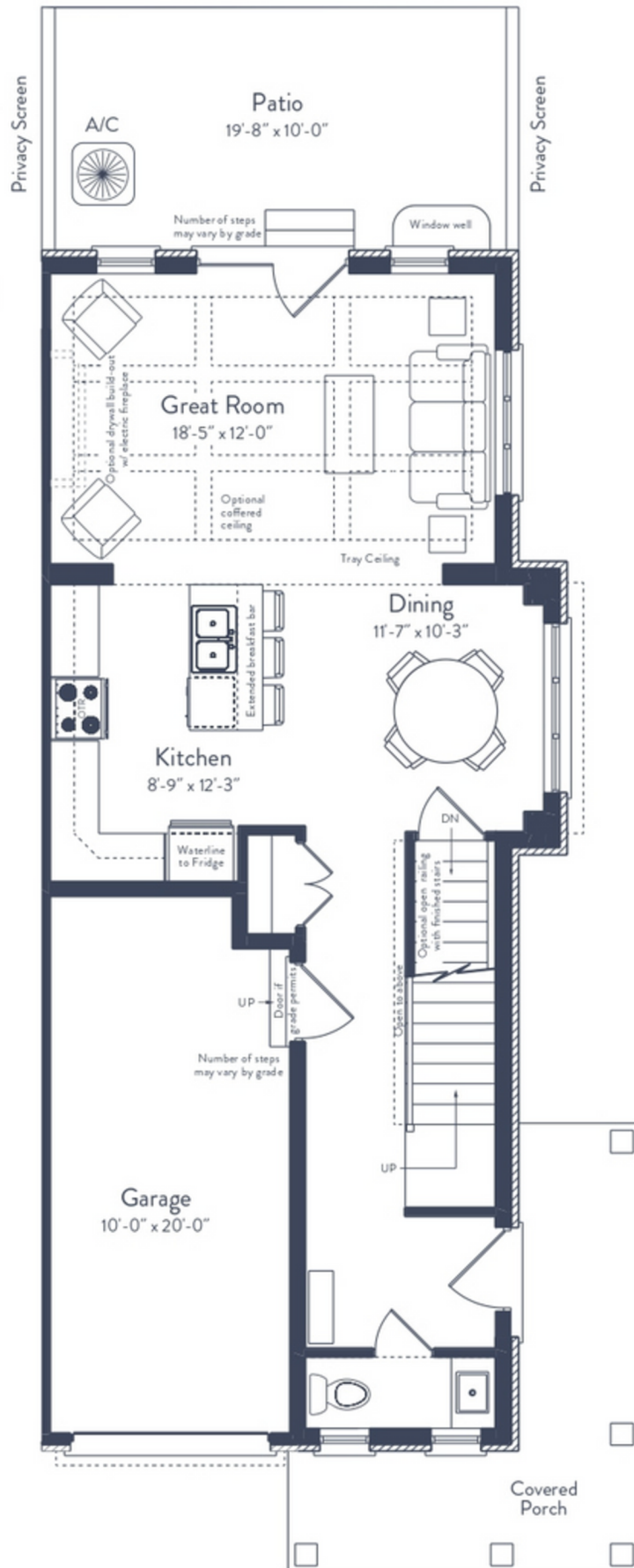


*Furniture/decor pictured is not included

Features

MAIN FLOOR

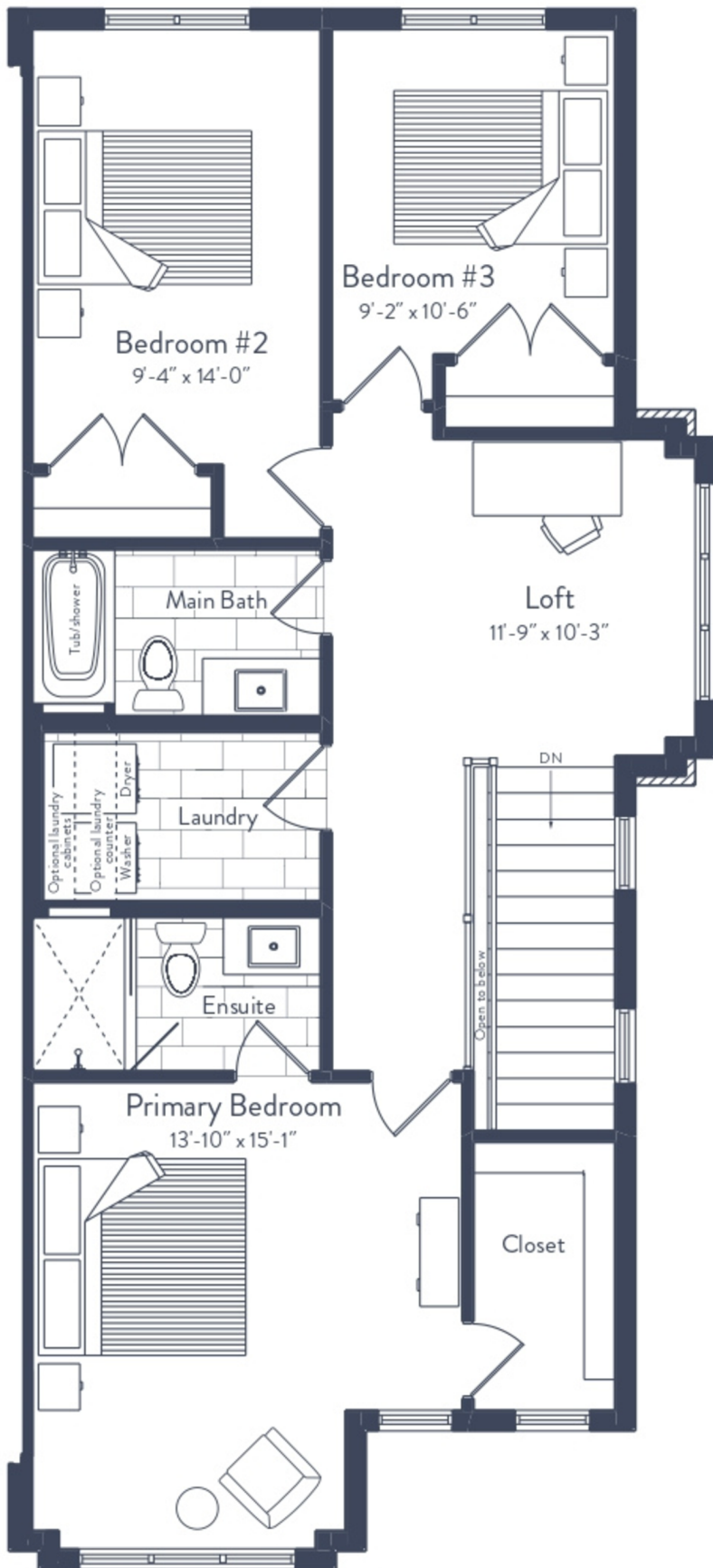
- 9' ceilings
- Hardwood floors throughout (excludes powder room)
- Hardwood stairs from main to second floor
- Pot lights
- Chef's kitchen includes, pantry, pots and pans drawers, two bin garbage system, upgraded faucet, and tiled backsplash
- Stainless steel appliance package
- Concealed under cabinet lighting in kitchen
- Coffered ceiling with wood inlay in great room
- Drywall build-out with electric fireplace
- Garden doors off the great room
- Designer powder room with floating vanity, upgraded floor tile, cabinetry, and faucet
- Quartz countertops throughout



Features

SECOND FLOOR

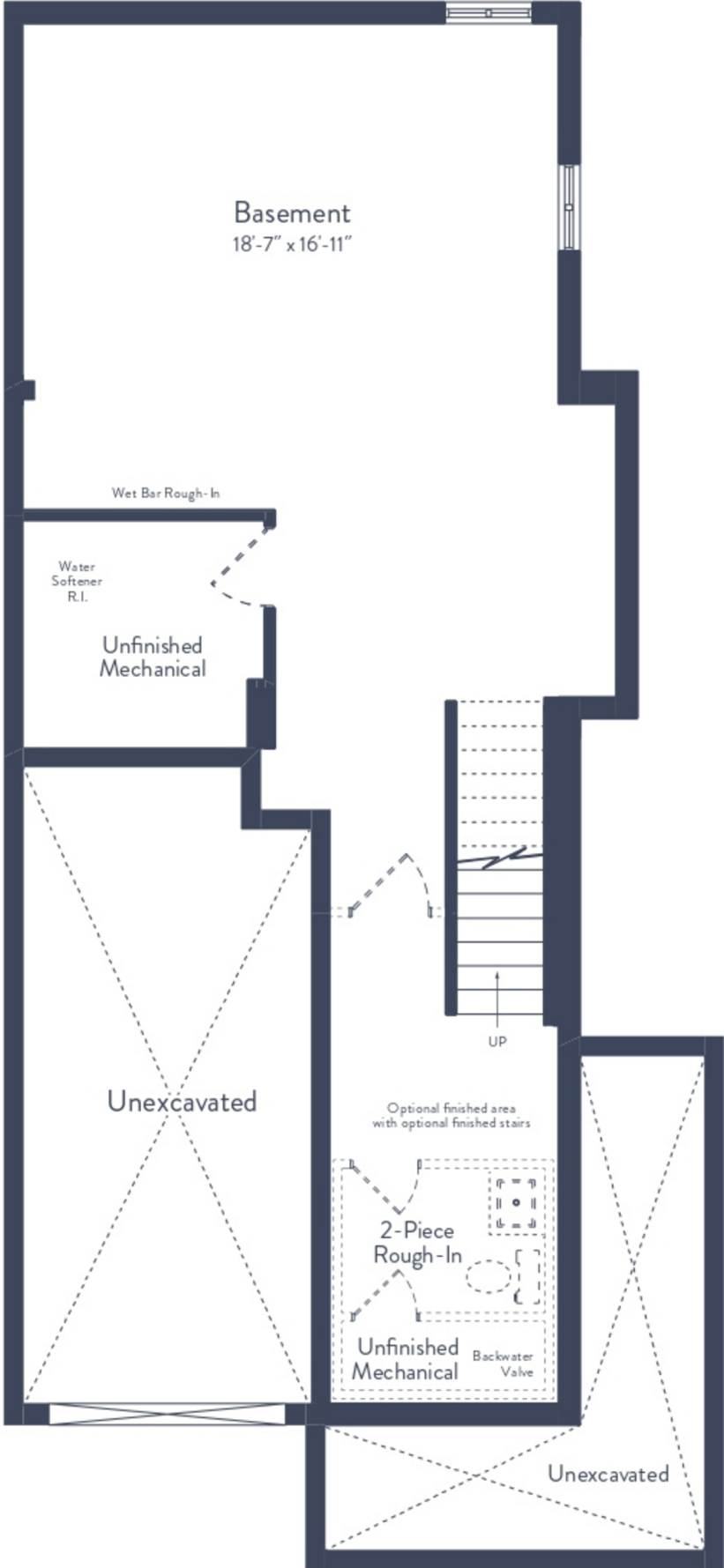
- Hardwood floors in hallway and loft
- Railing with iron pickets
- Pot lights in hallway
- Quartz countertops in bathrooms
- Spa-inspired ensuite with upgraded floor tile, cabinetry, countertop, shower wall tile, and shower fixtures
- Laundry room quartz countertops and upper cabinetry



Features

BASEMENT

- Finished basement
- 2 piece bathroom
- Built-in high top bar
- Basement stairs opened up with railing



Fieldstone Site Plan



Designer Homes provide the benefits of a new home, without the wait.

DEPOSIT:
10% due on firming.

CONDO FEE:
Estimated \$250

CLOSING:
As early as 30 days.

- *Included in Condo Fees:
- Exterior maintenance of homes included to ensure long-term aesthetically pleasing streetscape
 - Common areas maintained by professional landscaping company
 - Snow removal and maintenance of private laneway, visitor parking spaces and sidewalk
 - Professional property management and administration
 - Exterior lighting operated and maintained by Condominium Corporation

SANDRA AVEIRO | New Home Sales Representative
sales@granitehomes.ca | 519.222.3988



Base house prices include all sales taxes (HST). Rebate signed back to builder on closing. Prices and promotions are subject to change without notice. Please see Sales Professional for details. E. & O. E. Prices effective September 2024.