

# NORTHSIDE

GUELPH

FLOOR PLANS

# Terrace Level

## INTERIOR UNIT

# NORTHSIDE

GUELPH

### UNIT DETAILS

2 BEDROOM

2 BATHROOM

TERRACE

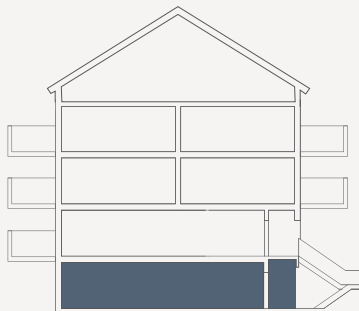
### LIVING SPACE

INTERIOR 993 SQ. FT.

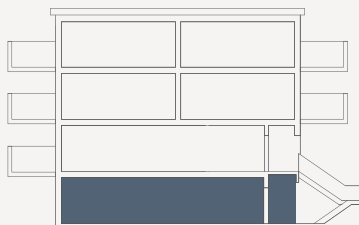
EXTERIOR 73 SQ. FT.

**TOTAL 1,066 SQ. FT.**

### UNIT LOCATION



BLOCK A | B | C | D | E

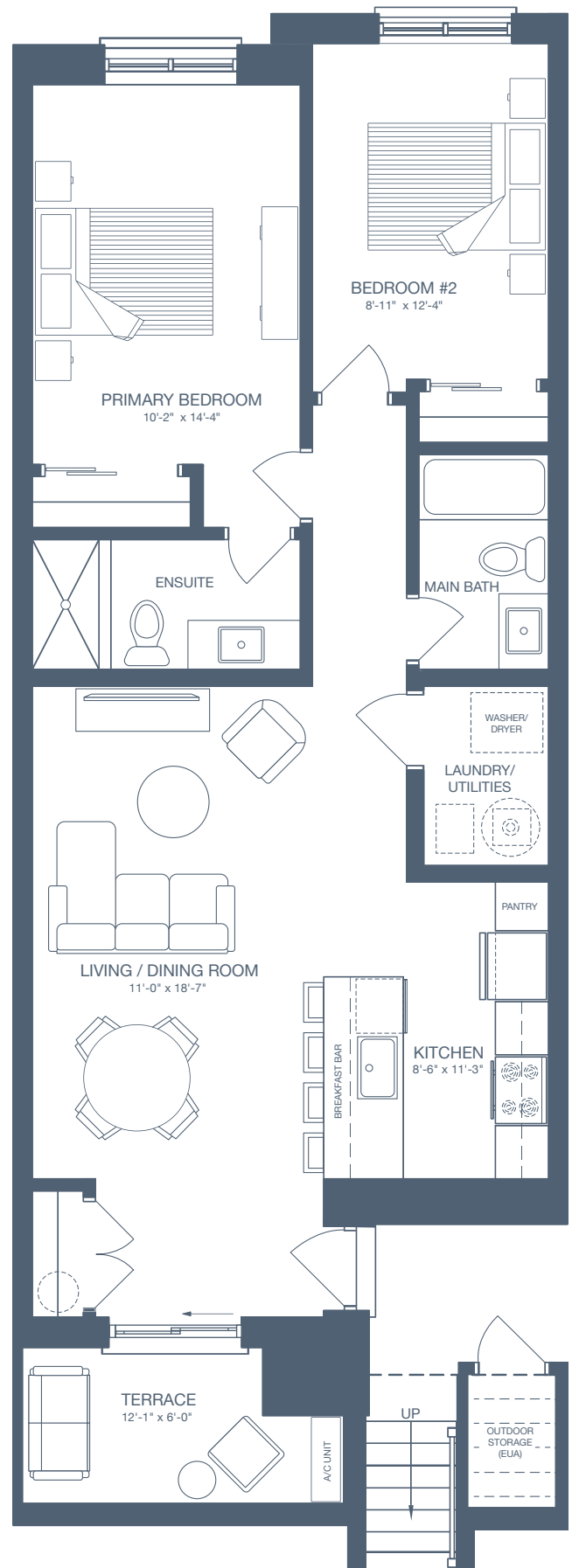


BLOCK F | G



All drawings are an artist's concept and may vary slightly from the final product. E. & O.E. Actual usable floor space may vary from stated area, and square footage has been calculated based on usable living space according to the Tarion rules. Drawings may show optional features which may not be included in the base price. Bulkheads and box outs may be required as chases for plumbing and mechanical. Location of mechanical room equipment will be located by the builder and may change based on plan. Number of steps in front entry may vary based on grade.

[GRANITEHOMES.CA](http://GRANITEHOMES.CA)



# Main Level

## INTERIOR UNIT

# NORTHSIDE

GUELPH

### UNIT DETAILS

2 BEDROOM

2 BATHROOM

BALCONY

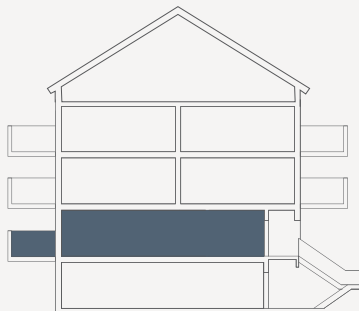
### LIVING SPACE

INTERIOR 869 SQ. FT.

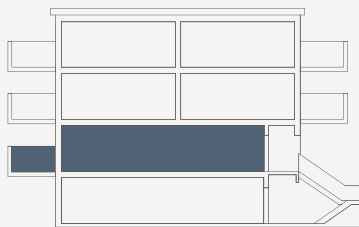
EXTERIOR 63 SQ. FT.

**TOTAL 932 SQ. FT.**

### UNIT LOCATION



BLOCK A | B | C | D | E

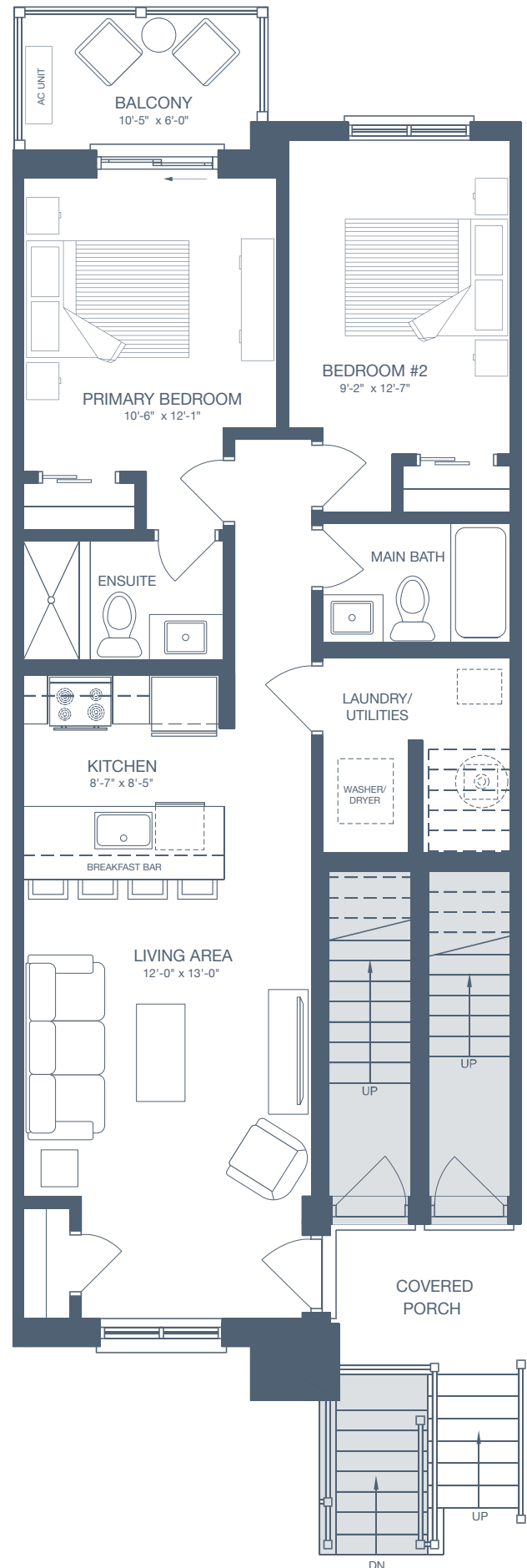


BLOCK F | G



All drawings are an artist's concept and may vary slightly from the final product. E. & O.E. Actual usable floor space may vary from stated area, and square footage has been calculated based on usable living space according to the Tarion rules. Drawings may show optional features which may not be included in the base price. Bulkheads and box outs may be required as chases for plumbing and mechanical. Location of mechanical room equipment will be located by the builder and may change based on plan. Number of steps in front entry may vary based on grade.

[GRANITEHOMES.CA](http://GRANITEHOMES.CA)



# Front Two-Storey

## INTERIOR UNIT

# NORTHSIDE

GUELPH

### UNIT DETAILS

2 BEDROOM

2 BATHROOM

2 BALCONIES

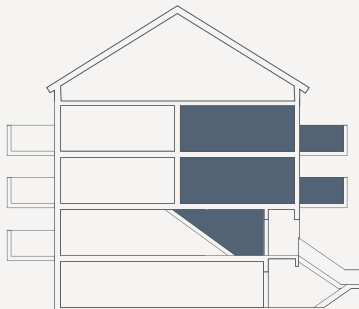
### LIVING SPACE

INTERIOR 1,106 SQ. FT.

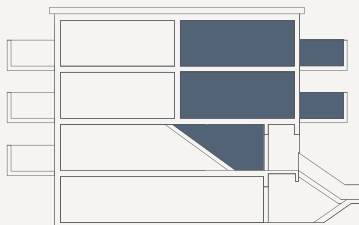
EXTERIOR 126 SQ. FT.

**TOTAL 1,232 SQ. FT.**

### UNIT LOCATION



BLOCK A | B | C | D | E

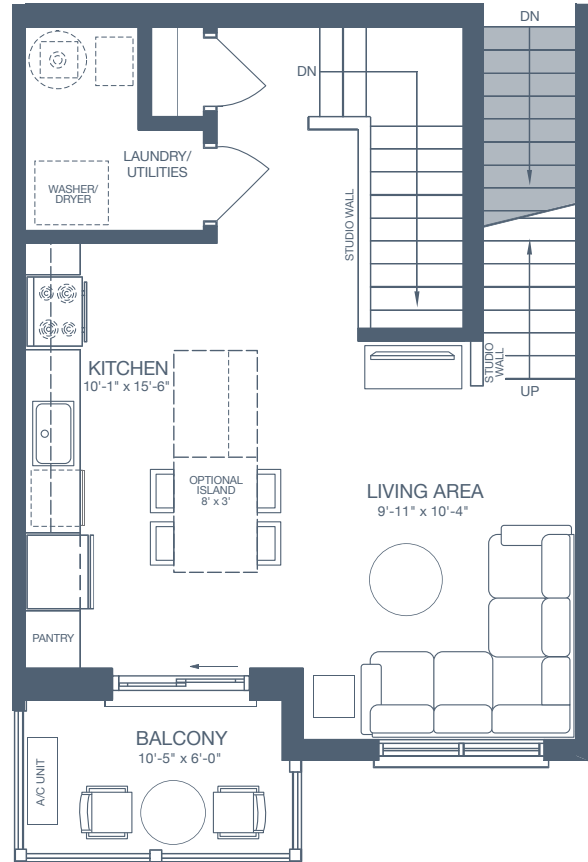


BLOCK F | G

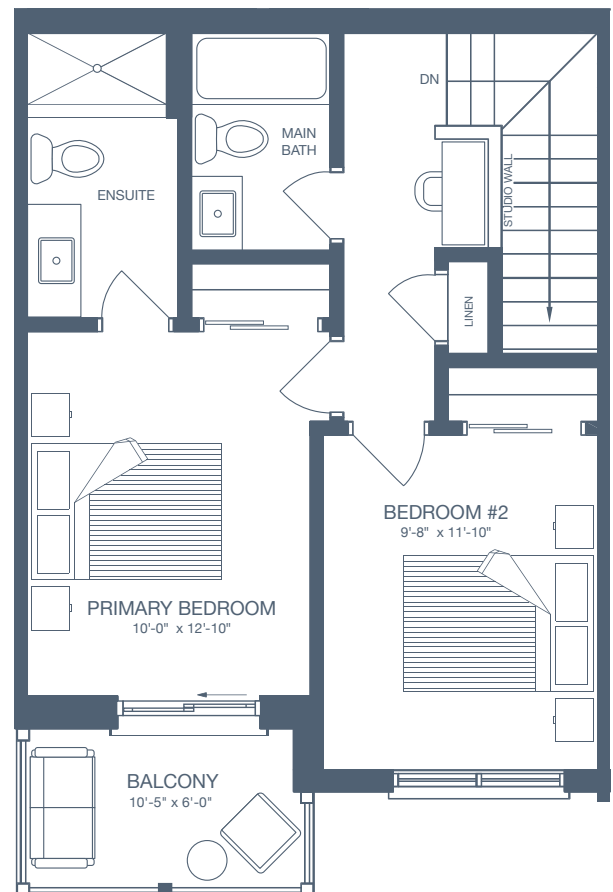


All drawings are an artist's concept and may vary slightly from the final product. E. & O.E. Actual usable floor space may vary from stated area, and square footage has been calculated based on usable living space according to the Tarion rules. Drawings may show optional features which may not be included in the base price. Bulkheads and box outs may be required as chases for plumbing and mechanical. Location of mechanical room equipment will be located by the builder and may change based on plan. Number of steps in front entry may vary based on grade.

[GRANITEHOMES.CA](http://GRANITEHOMES.CA)



SECOND LEVEL



THIRD LEVEL

# Rear Two-Storey

## INTERIOR UNIT

# NORTHSIDE

GUELPH

### UNIT DETAILS

2 BEDROOM

2 BATHROOM

2 BALCONIES

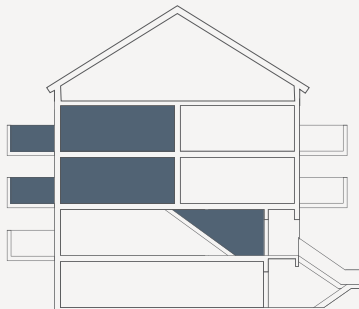
### LIVING SPACE

INTERIOR 1,120 SQ. FT.

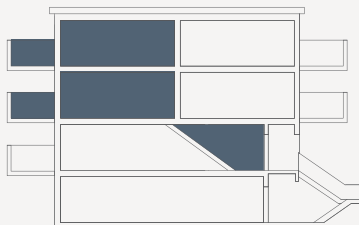
EXTERIOR 126 SQ. FT.

**TOTAL 1,246 SQ. FT.**

### UNIT LOCATION



BLOCK A | B | C | D | E

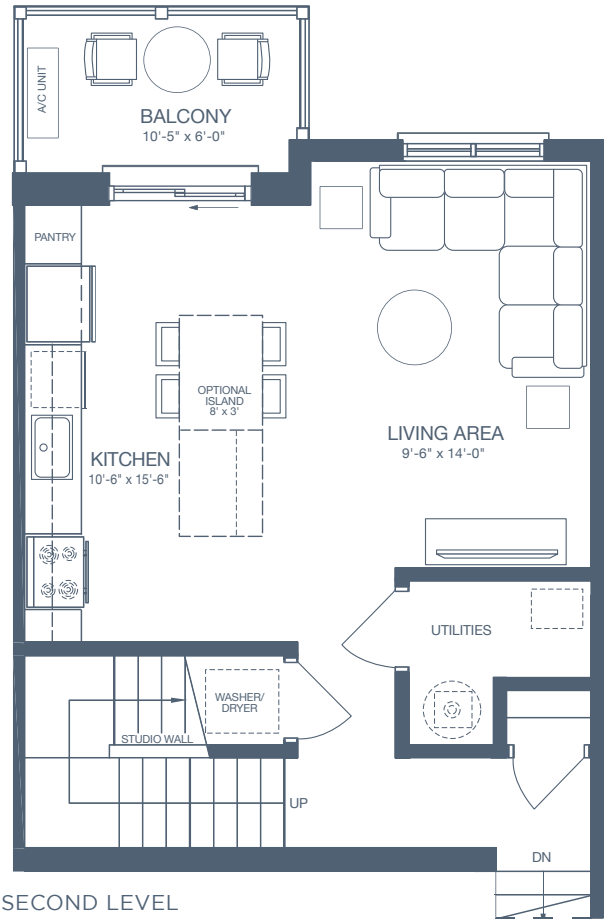


BLOCK F | G

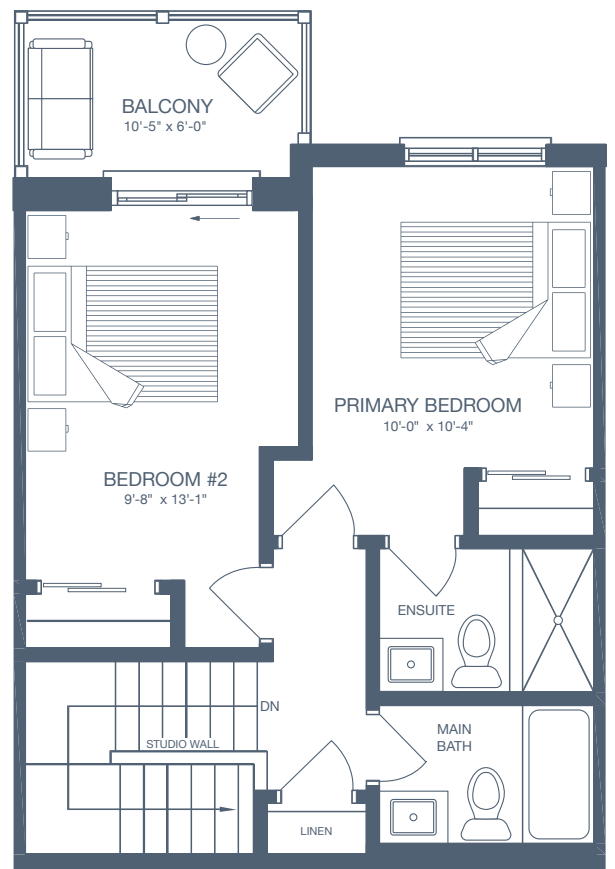


All drawings are an artist's concept and may vary slightly from the final product. E. & O.E. Actual usable floor space may vary from stated area, and square footage has been calculated based on usable living space according to the Tarion rules. Drawings may show optional features which may not be included in the base price. Bulkheads and box outs may be required as chases for plumbing and mechanical. Location of mechanical room equipment will be located by the builder and may change based on plan. Number of steps in front entry may vary based on grade.

[GRANITEHOMES.CA](http://GRANITEHOMES.CA)



SECOND LEVEL



THIRD LEVEL

# Terrace Level B

## NORTHSIDE

GUELPH

### END UNIT

#### UNIT DETAILS

2 BEDROOM

2 BATHROOM

TERRACE

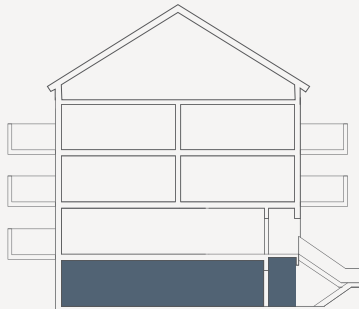
#### LIVING SPACE

INTERIOR 900 SQ. FT.

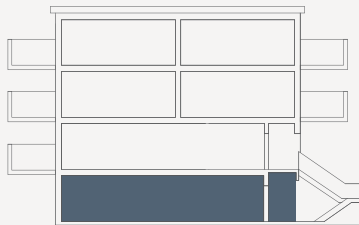
EXTERIOR 73 SQ. FT.

**TOTAL 973 SQ. FT.**

#### UNIT LOCATION



BLOCK A | B | C | D | E

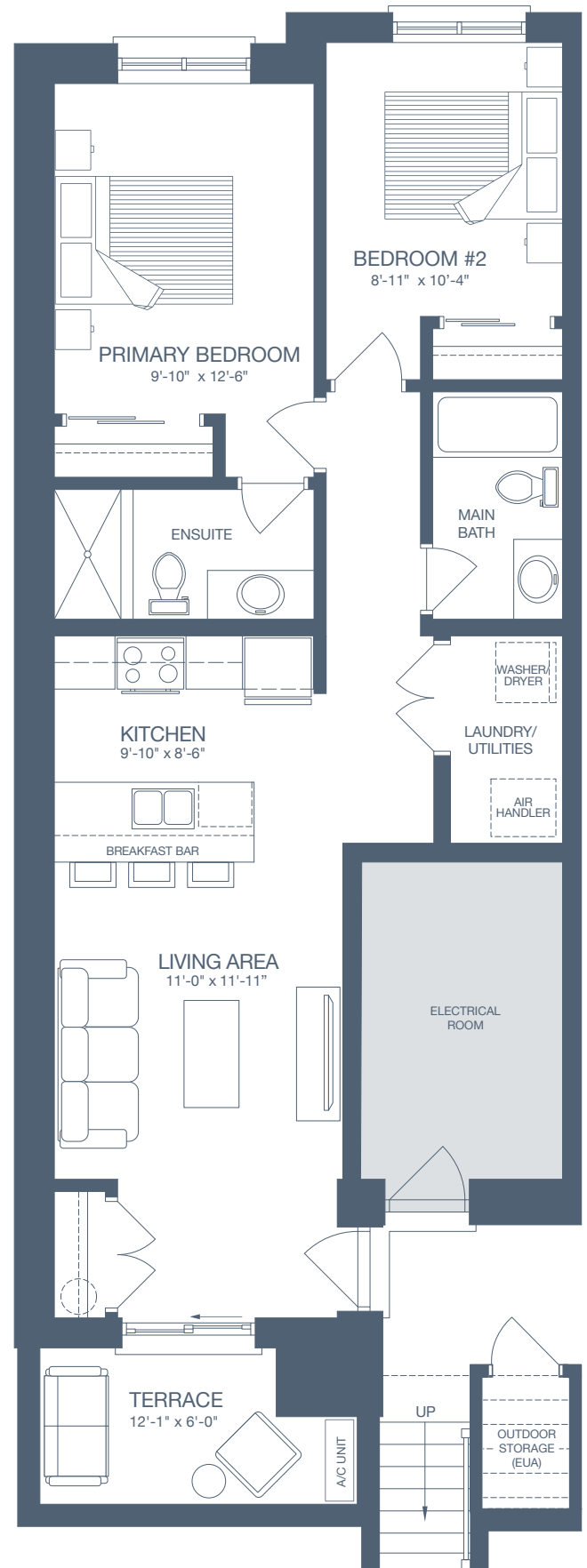


BLOCK F | G



All drawings are an artist's concept and may vary slightly from the final product. E. & O.E. Actual usable floor space may vary from stated area, and square footage has been calculated based on usable living space according to the Tarion rules. Drawings may show optional features which may not be included in the base price. Bulkheads and box outs may be required as chases for plumbing and mechanical. Location of mechanical room equipment will be located by the builder and may change based on plan. Number of steps in front entry may vary based on grade.

[GRANITEHOMES.CA](http://GRANITEHOMES.CA)



# Main Level

## END UNIT

# NORTHSIDE

GUELPH

### UNIT DETAILS

2 BEDROOM

2 BATHROOM

BALCONY

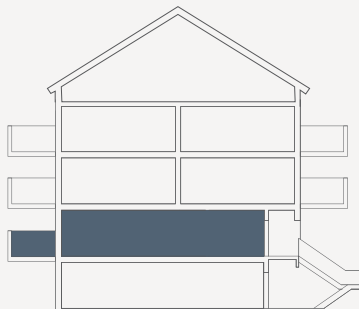
### LIVING SPACE

INTERIOR 885 SQ. FT.

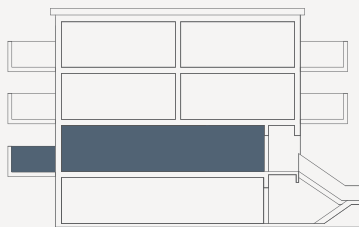
EXTERIOR 63 SQ. FT.

**TOTAL 948 SQ. FT.**

### UNIT LOCATION



BLOCK A | B | C | D | E

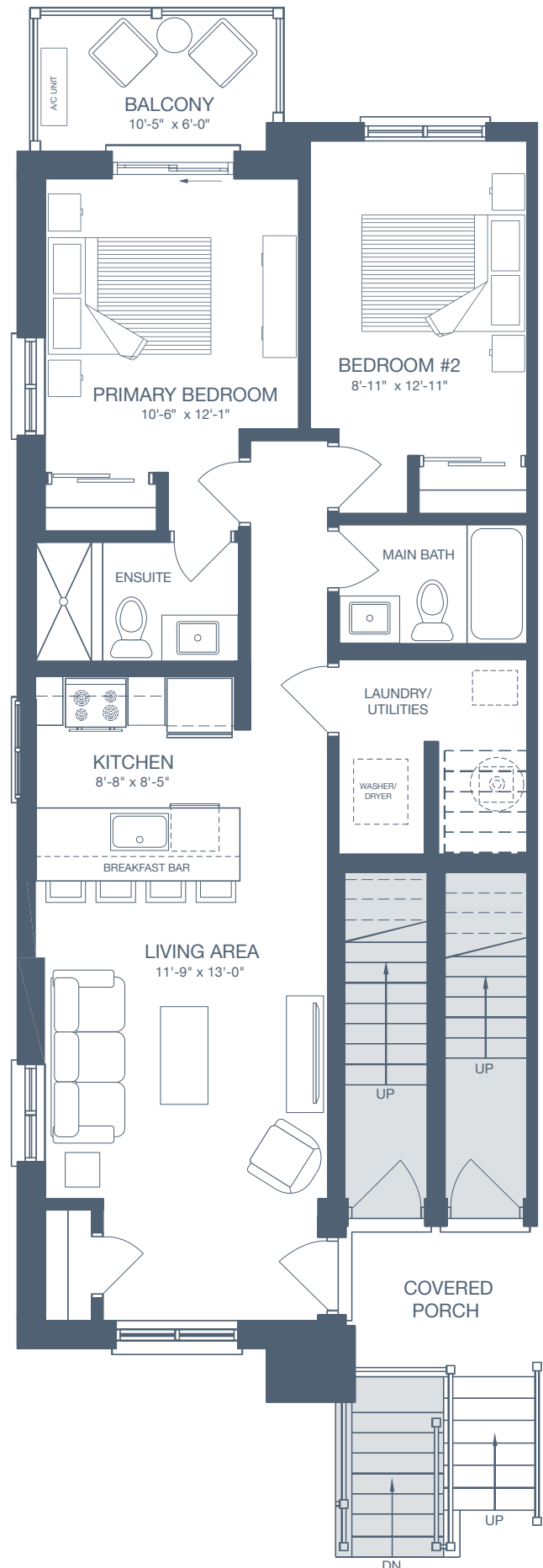


BLOCK F | G



All drawings are an artist's concept and may vary slightly from the final product. E. & O.E. Actual usable floor space may vary from stated area, and square footage has been calculated based on usable living space according to the Tarion rules. Drawings may show optional features which may not be included in the base price. Bulkheads and box outs may be required as chases for plumbing and mechanical. Location of mechanical room equipment will be located by the builder and may change based on plan. Number of steps in front entry may vary based on grade.

[GRANITEHOMES.CA](http://GRANITEHOMES.CA)



# Front Two-Storey

END UNIT

## NORTHSIDE

GUELPH

### UNIT DETAILS

2 BEDROOM

2 BATHROOM

2 BALCONIES

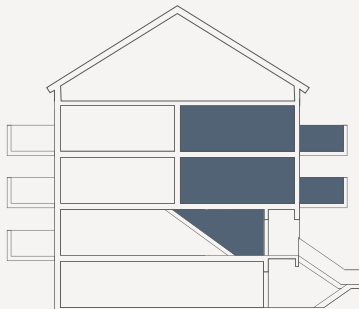
### LIVING SPACE

INTERIOR 1,122 SQ. FT.

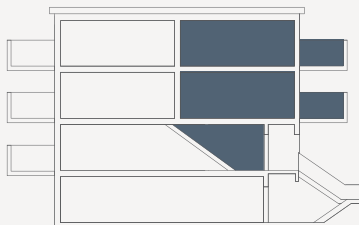
EXTERIOR 126 SQ. FT.

**TOTAL 1,248 SQ. FT.**

### UNIT LOCATION



BLOCK A | B | C | D | E

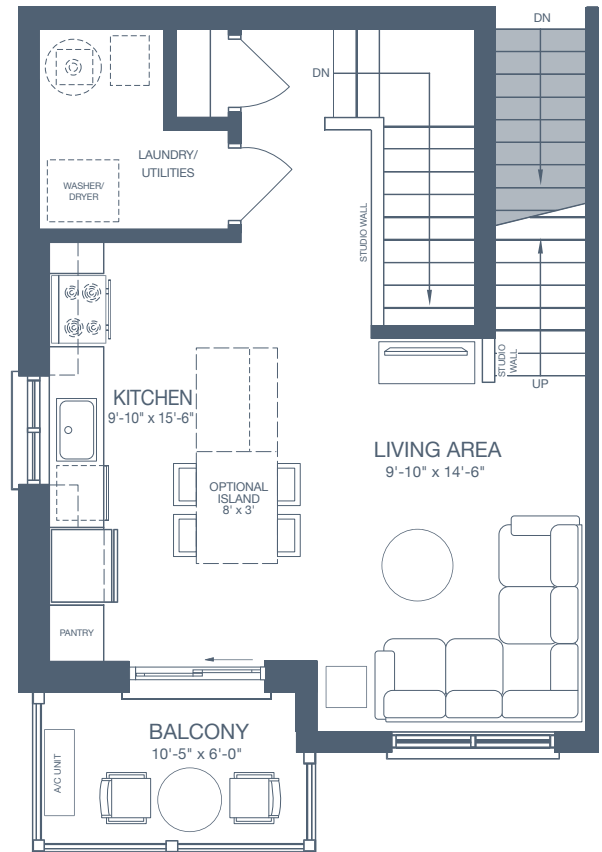


BLOCK F | G

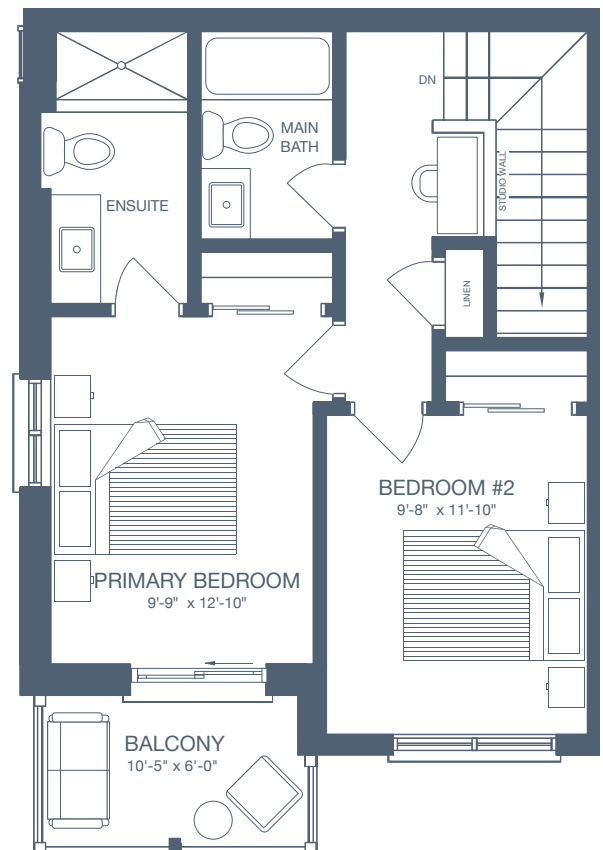


All drawings are an artist's concept and may vary slightly from the final product. E. & O.E. Actual usable floor space may vary from stated area, and square footage has been calculated based on usable living space according to the Tarion rules. Drawings may show optional features which may not be included in the base price. Bulkheads and box outs may be required as chases for plumbing and mechanical. Location of mechanical room equipment will be located by the builder and may change based on plan. Number of steps in front entry may vary based on grade.

[GRANITEHOMES.CA](http://GRANITEHOMES.CA)



SECOND LEVEL



THIRD LEVEL



# Rear Two-Storey

END UNIT

## NORTHSIDE

GUELPH

### UNIT DETAILS

2 BEDROOM

2 BATHROOM

2 BALCONIES

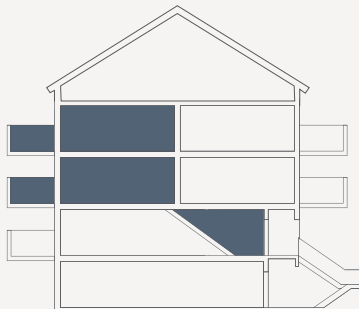
### LIVING SPACE

INTERIOR 1,135 SQ. FT.

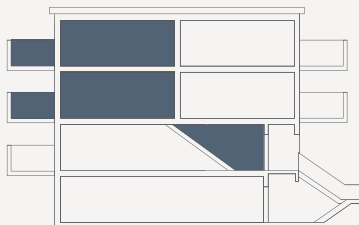
EXTERIOR 126 SQ. FT.

**TOTAL 1,261 SQ. FT.**

### UNIT LOCATION



BLOCK A | B | C | D | E

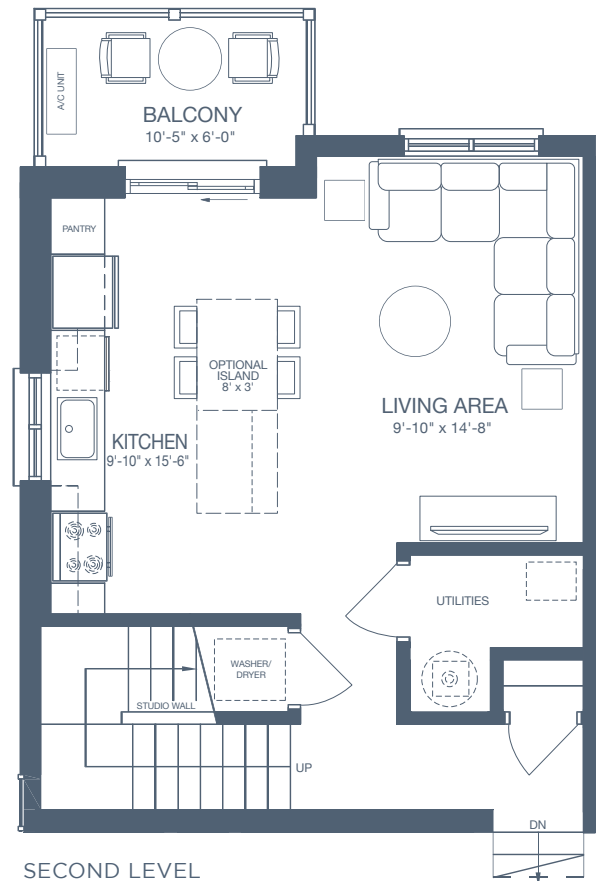


BLOCK F | G

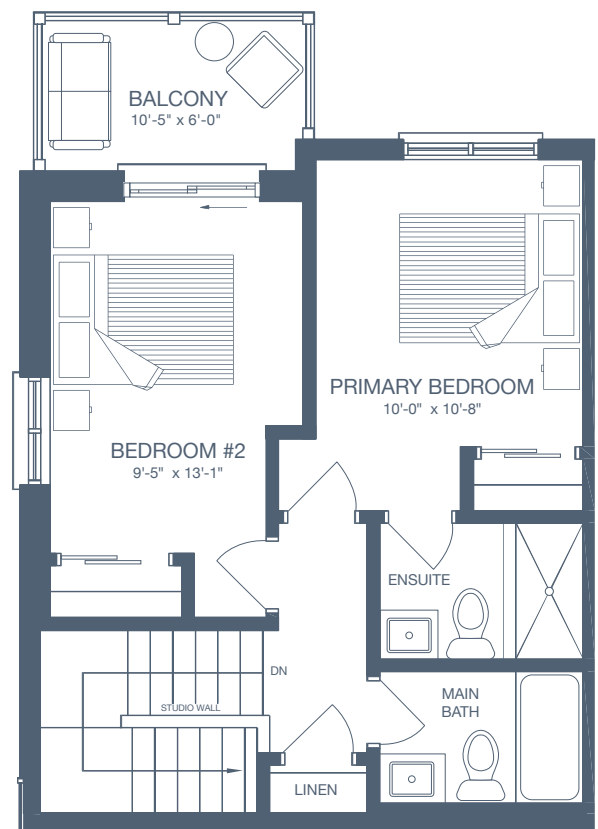


All drawings are an artist's concept and may vary slightly from the final product. E. & O.E. Actual usable floor space may vary from stated area, and square footage has been calculated based on usable living space according to the Tarion rules. Drawings may show optional features which may not be included in the base price. Bulkheads and box outs may be required as chases for plumbing and mechanical. Location of mechanical room equipment will be located by the builder and may change based on plan. Number of steps in front entry may vary based on grade.

[GRANITEHOMES.CA](http://GRANITEHOMES.CA)



SECOND LEVEL



THIRD LEVEL

# Terrace Level B

# NORTHSIDE

GUELPH

## ENHANCED END UNIT

### UNIT DETAILS

2 BEDROOM

2 BATHROOM

TERRACE

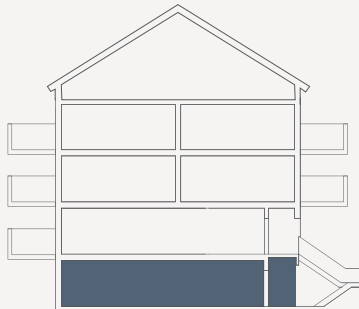
### LIVING SPACE

INTERIOR 919 SQ. FT.

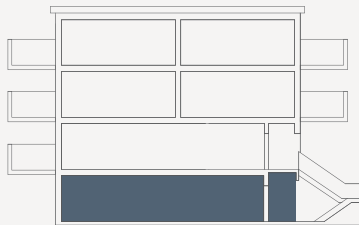
EXTERIOR 73 SQ. FT.

**TOTAL 992 SQ. FT.**

### UNIT LOCATION



BLOCK A | B | C | D | E

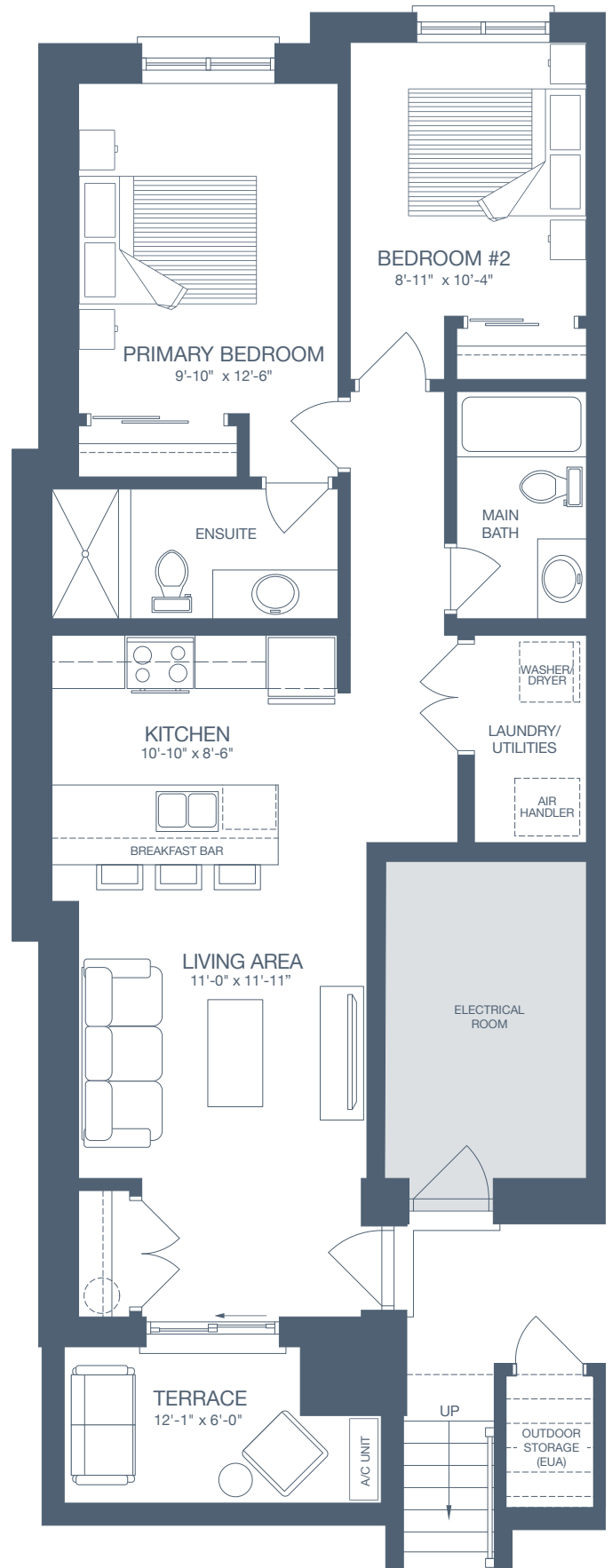


BLOCK F | G



All drawings are an artist's concept and may vary slightly from the final product. E. & O.E. Actual usable floor space may vary from stated area, and square footage has been calculated based on usable living space according to the Tarion rules. Drawings may show optional features which may not be included in the base price. Bulkheads and box outs may be required as chases for plumbing and mechanical. Location of mechanical room equipment will be located by the builder and may change based on plan. Number of steps in front entry may vary based on grade.

[GRANITEHOMES.CA](http://GRANITEHOMES.CA)



# Terrace Level

## ENHANCED END UNIT

# NORTHSIDE

GUELPH

### UNIT DETAILS

2 BEDROOM

2 BATHROOM

TERRACE

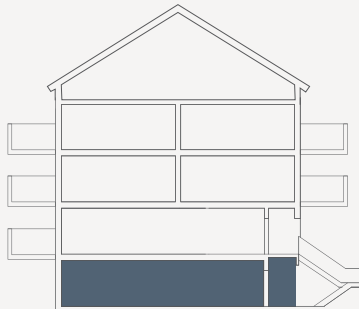
### LIVING SPACE

INTERIOR 1,028 SQ. FT.

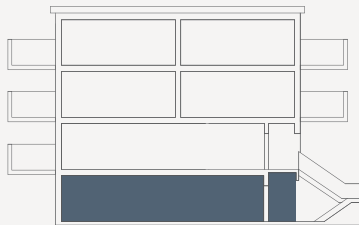
EXTERIOR 73 SQ. FT.

**TOTAL 1,101 SQ. FT.**

### UNIT LOCATION



BLOCK A | B | C | D | E

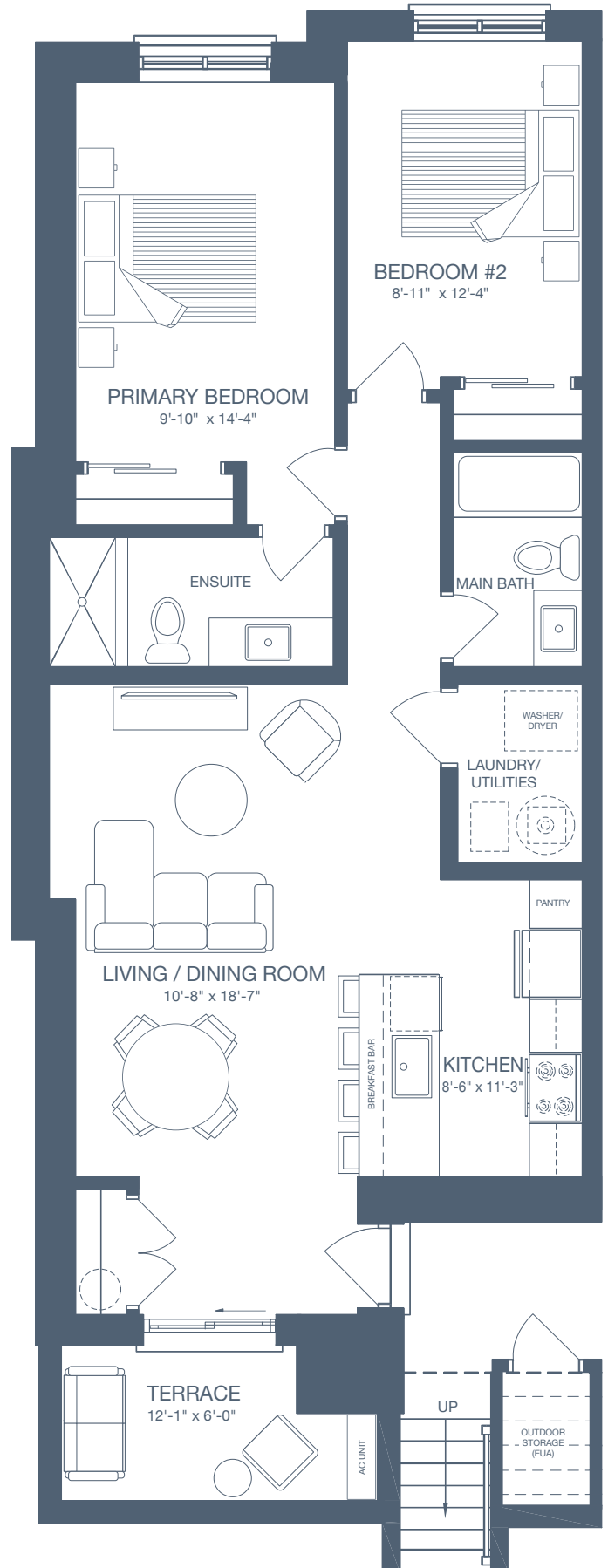


BLOCK F | G



All drawings are an artist's concept and may vary slightly from the final product. E. & O.E. Actual usable floor space may vary from stated area, and square footage has been calculated based on usable living space according to the Tarion rules. Drawings may show optional features which may not be included in the base price. Bulkheads and box outs may be required as chases for plumbing and mechanical. Location of mechanical room equipment will be located by the builder and may change based on plan. Number of steps in front entry may vary based on grade.

[GRANITEHOMES.CA](http://GRANITEHOMES.CA)



# Main Level

## ENHANCED END UNIT

# NORTHSIDE

GUELPH

### UNIT DETAILS

2 BEDROOM

2 BATHROOM

BALCONY

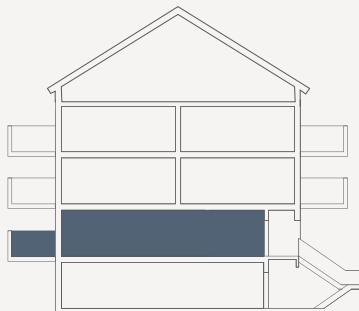
### LIVING SPACE

INTERIOR 903 SQ. FT.

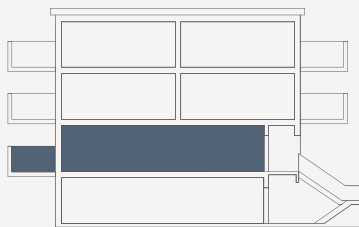
EXTERIOR 63 SQ. FT.

**TOTAL 966 SQ. FT.**

### UNIT LOCATION



BLOCK A | B | C | D | E

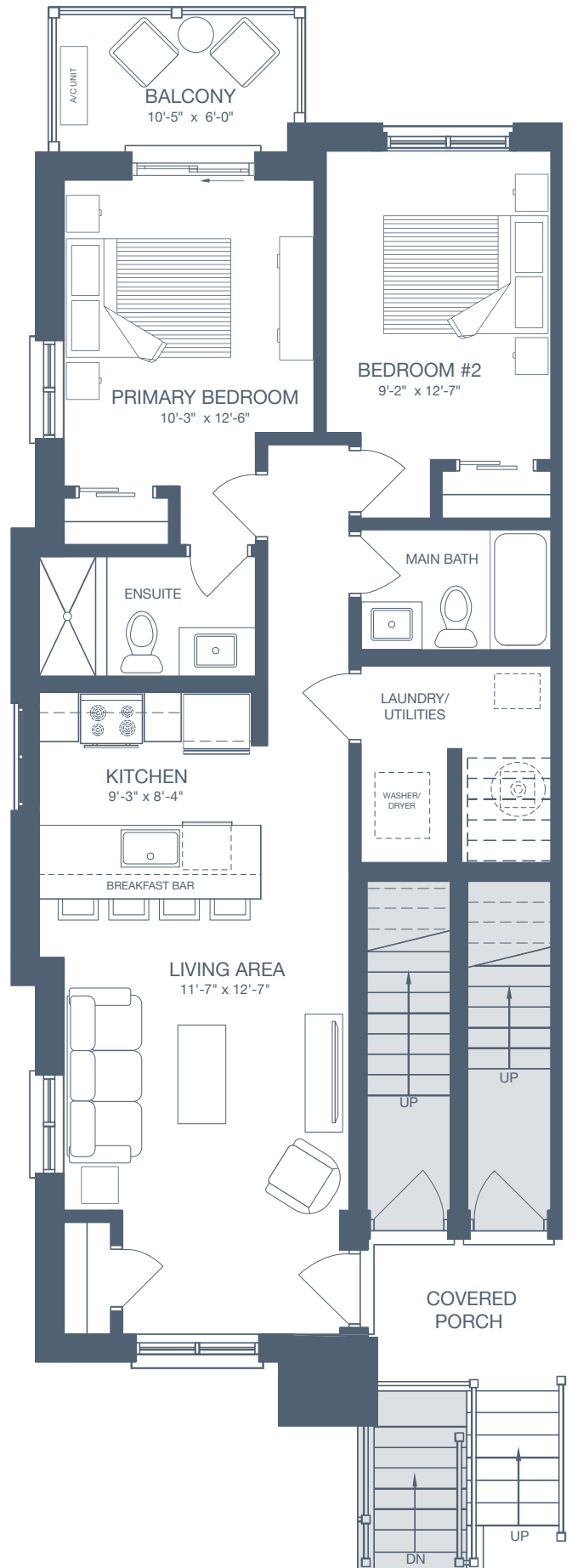


BLOCK F | G



All drawings are an artist's concept and may vary slightly from the final product. E. & O.E. Actual usable floor space may vary from stated area, and square footage has been calculated based on usable living space according to the Tarion rules. Drawings may show optional features which may not be included in the base price. Bulkheads and box outs may be required as chases for plumbing and mechanical. Location of mechanical room equipment will be located by the builder and may change based on plan. Number of steps in front entry may vary based on grade.

[GRANITEHOMES.CA](http://GRANITEHOMES.CA)



# Front Two-Storey

## ENHANCED END UNIT

# NORTHSIDE

GUELPH

### UNIT DETAILS

2 BEDROOM

2 BATHROOM

2 BALCONIES

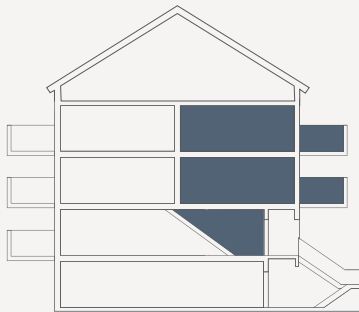
### LIVING SPACE

INTERIOR 1,142 SQ. FT.

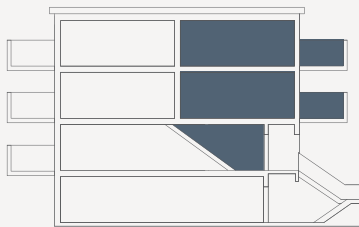
EXTERIOR 126 SQ. FT.

**TOTAL 1,268 SQ. FT.**

### UNIT LOCATION



BLOCK A | B | C | D | E

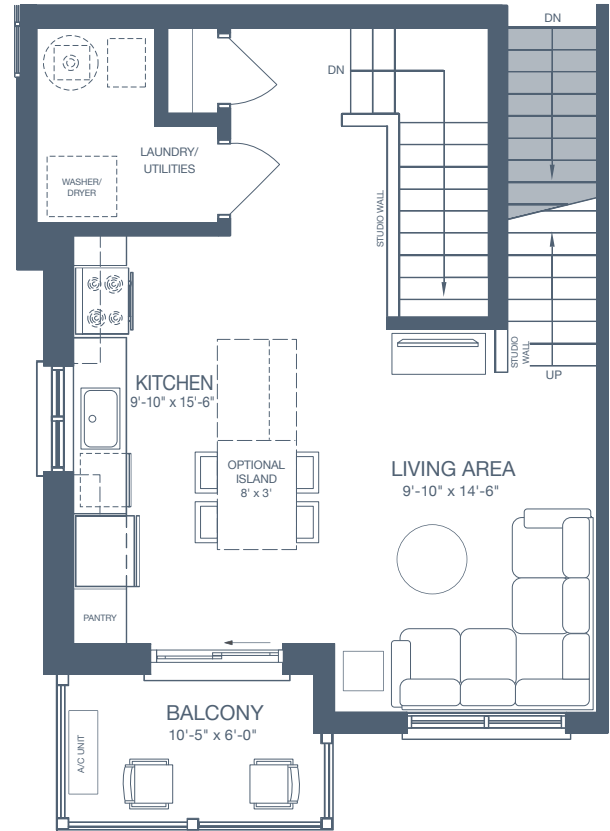


BLOCK F | G

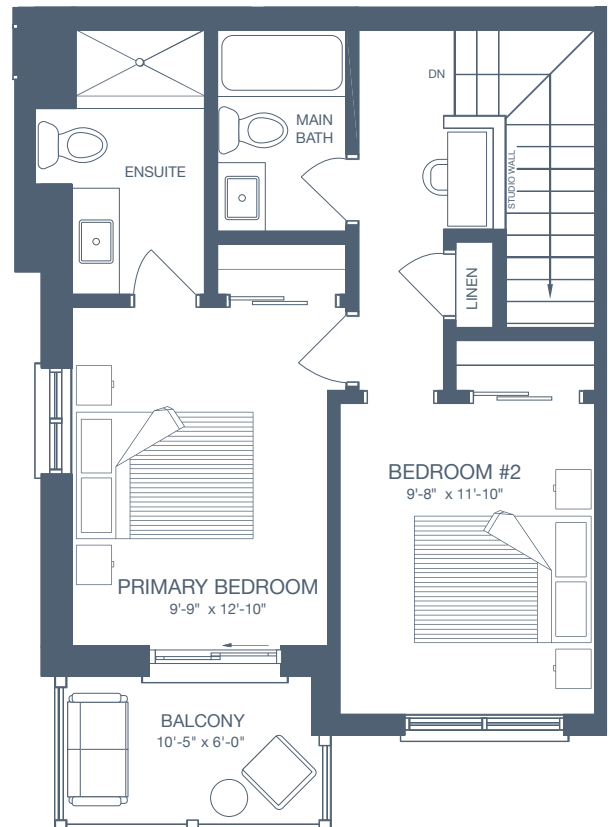


All drawings are an artist's concept and may vary slightly from the final product. E. & O.E. Actual usable floor space may vary from stated area, and square footage has been calculated based on usable living space according to the Tarion rules. Drawings may show optional features which may not be included in the base price. Bulkheads and box outs may be required as chases for plumbing and mechanical. Location of mechanical room equipment will be located by the builder and may change based on plan. Number of steps in front entry may vary based on grade.

[GRANITEHOMES.CA](http://GRANITEHOMES.CA)



SECOND LEVEL



THIRD LEVEL

# Rear Two-Storey

## ENHANCED END UNIT

# NORTHSIDE

GUELPH

### UNIT DETAILS

2 BEDROOM

2 BATHROOM

2 BALCONIES

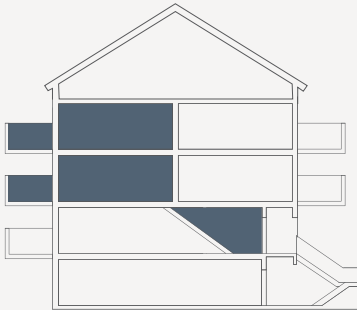
### LIVING SPACE

INTERIOR 1,152 SQ. FT.

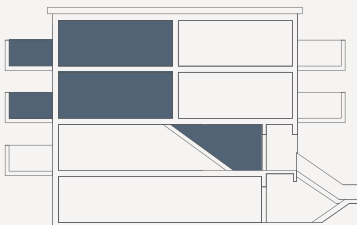
EXTERIOR 126 SQ. FT.

**TOTAL 1,278 SQ. FT.**

### UNIT LOCATION



BLOCK A | B | C | D | E

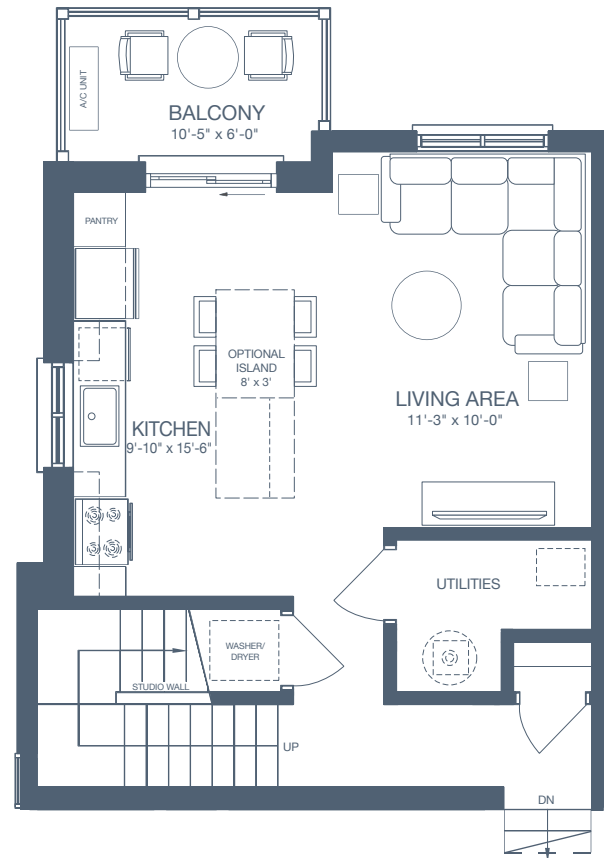


BLOCK F | G

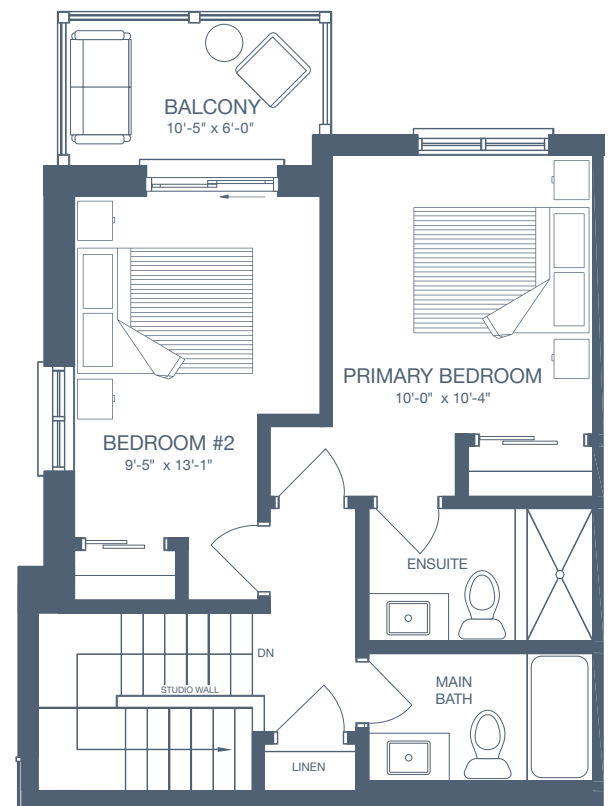


All drawings are an artist's concept and may vary slightly from the final product. E. & O.E. Actual usable floor space may vary from stated area, and square footage has been calculated based on usable living space according to the Tarion rules. Drawings may show optional features which may not be included in the base price. Bulkheads and box outs may be required as chases for plumbing and mechanical. Location of mechanical room equipment will be located by the builder and may change based on plan. Number of steps in front entry may vary based on grade.

[GRANITEHOMES.CA](http://GRANITEHOMES.CA)



SECOND LEVEL



THIRD LEVEL

# NORTHSIDE

GUELPH

[GRANITEHOMES.CA](http://GRANITEHOMES.CA)  
[NORTHSIDE@GRANITEHOMES.CA](mailto:NORTHSIDE@GRANITEHOMES.CA)

