



THE SABLE

3,339 SQ. FT.



ELEVATION A

Each home design has two elevations to choose from.
All elevations are available in any of the colour packages.
All drawings and renderings are an artist's concept and may vary slightly from the final product. E. & O.E..
v1.0 - Dec 2024





THE SABLE

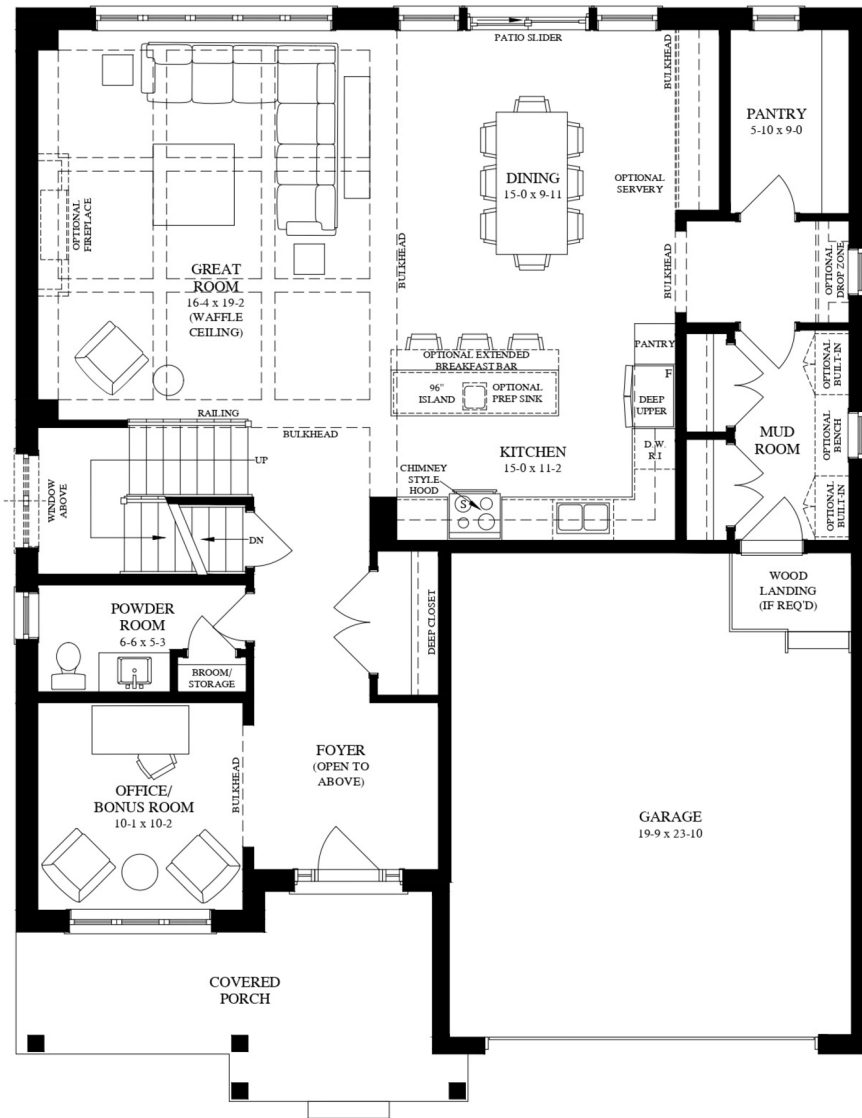
3,339 SQ. FT. 2 STOREY

BEDROOMS:
4/5

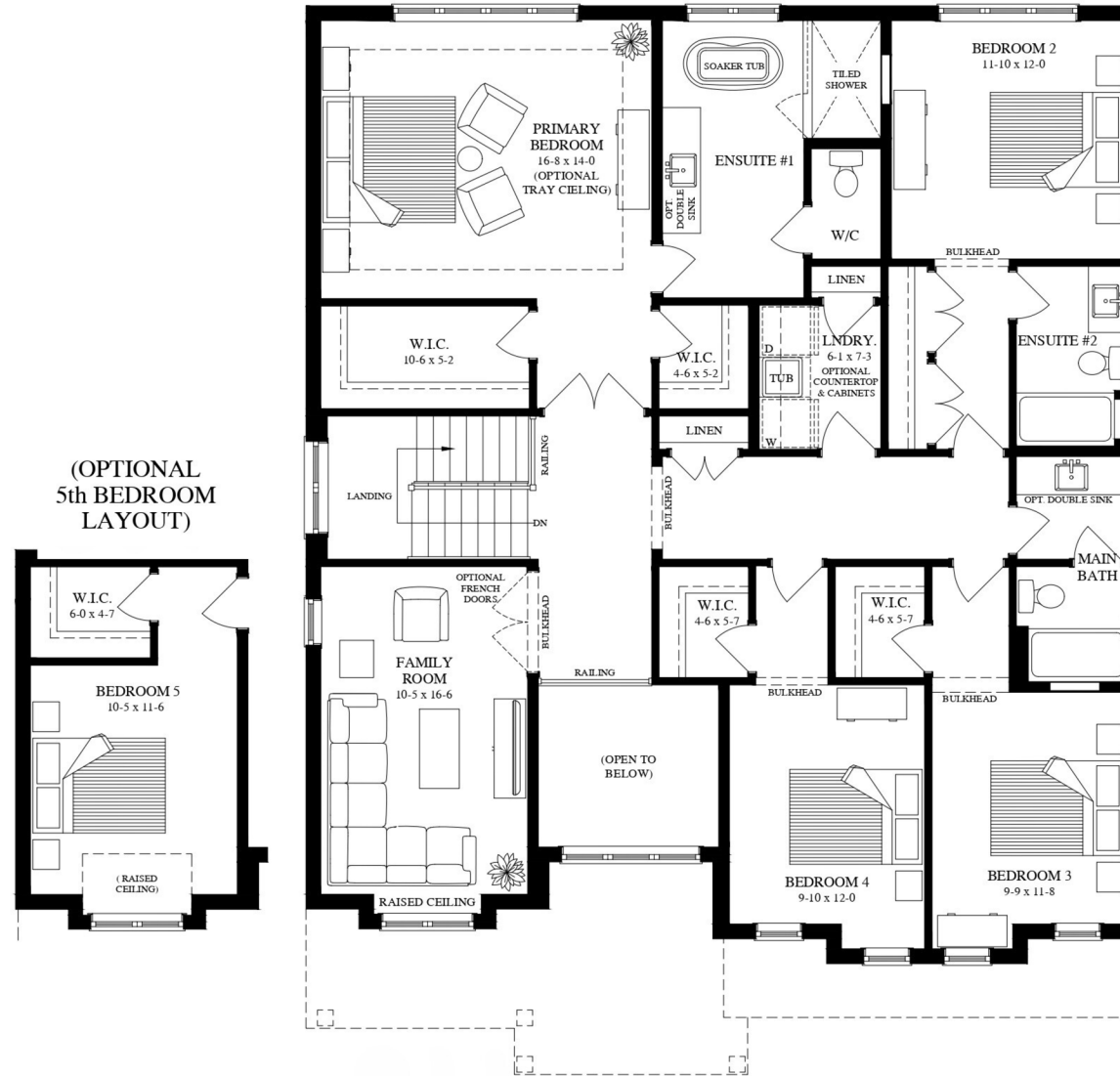
BATHROOMS:
3.5

LOT FRONTAGE:
50'

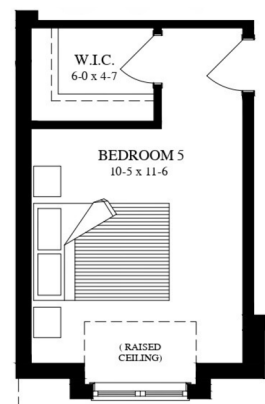
MAIN FLOOR
1492 Sq. Ft.



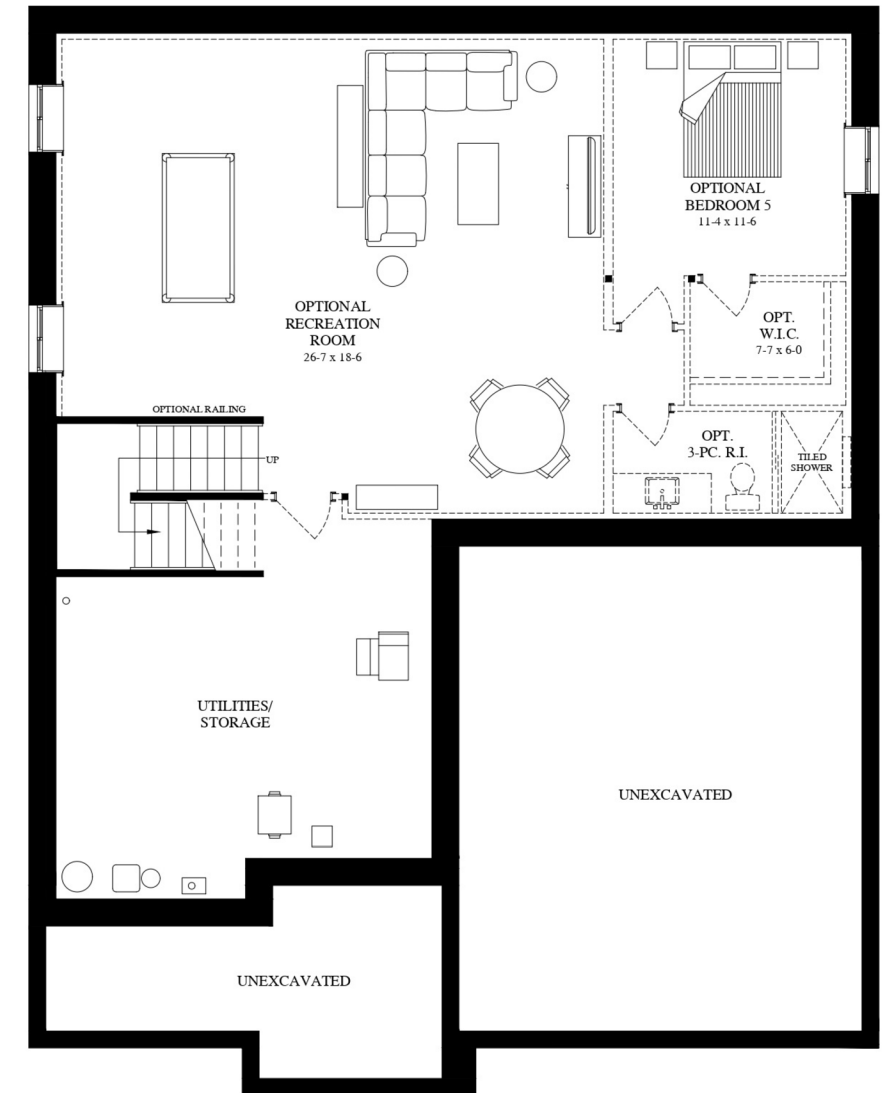
SECOND FLOOR
1847 Sq. Ft.



(OPTIONAL
5th BEDROOM
LAYOUT)



BASEMENT
1114 Sq. Ft. Optional Finished Basement



Each home design has two elevations to choose from. All elevations are available in any of the colour packages pending subdivision guidelines.

All drawings and renderings are an artist's concept and may vary slightly from the final product. E. & O.E. Actual usable floor space may vary from stated area, and square footage has been calculated based on usable living space according to the Tarion rules. Drawings may show optional features which may not be included in the base price. Bulkheads and box outs may be required as chases for plumbing and mechanical. Location of mechanical room equipment will be located by the builder and may change based on plan. Garage man door location may vary subject to grade. Number of steps in front entry, rear entry (if applicable) and garage entry may vary based on grade. Actual finishes may differ from what is shown in rendering.





ELEVATION B

SANDRA AVEIRO

New Home Sales Representative

519.222.3988 | sales@granitehomes.ca

granitehomes.ca/south-river

Each home design has two elevations to choose from.

All elevations are available in any of the colour packages.

All drawings and renderings are an artist's concept and may vary slightly from the final product. E. & O.E.

v1.0 - Dec 2024

