

NORTHSIDE

GUELPH

MOVE-IN READY STACKED TOWNHOME

UNIT A137

TERRACE LEVEL B - END

SQ. FT.
900

BEDROOMS
2

BATHROOMS
2



\$548,990

824 Woolwich St., Guelph

Terrace Level B

END UNIT

NORTHSIDE

GUELPH

UNIT DETAILS

2 BEDROOM

2 BATHROOM

TERRACE

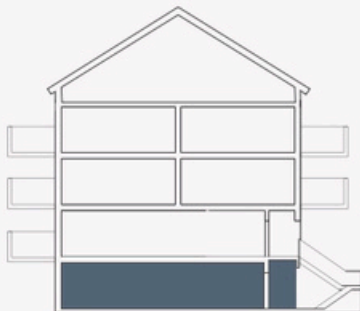
LIVING SPACE

INTERIOR 900 SQ. FT.

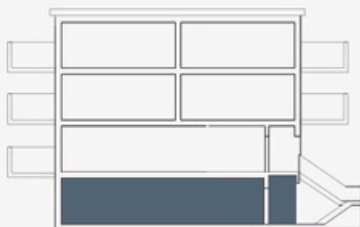
EXTERIOR 73 SQ. FT.

TOTAL 973 SQ. FT.

UNIT LOCATION



BLOCK A | B | C | D | E

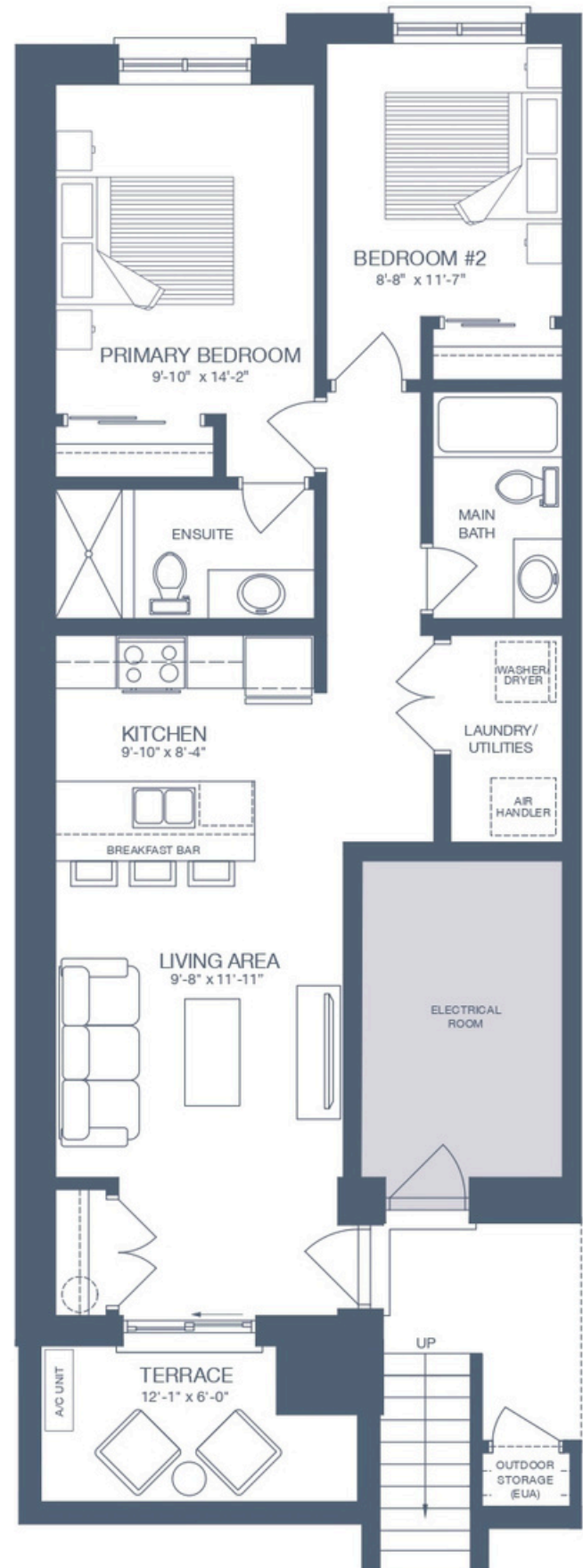


BLOCK F | G



All drawings are an artist's concept and may vary slightly from the final product. E. & O.E. Actual usable floor space may vary from stated area, and square footage has been calculated based on usable living space according to the Tarion rules. Drawings may show optional features which may not be included in the base price. Bulkheads and box outs may be required as chases for plumbing and mechanical. Location of mechanical room equipment will be located by the builder and may change based on plan. Number of steps in front entry may vary based on grade. March 2025.

GRANITEHOMES.CA



NORTHSIDE

GUELPH



IVORY ENHANCED INTERIOR PACKAGE

Extended Upper Cabinetry
Level 5 Quartz Countertops
Subway Tile Backsplash
Gold Kitchen Faucet
Pendant Fixtures Over Peninsula

Northside Site Plan



Move-in ready homes provide the benefits of a new home, without the wait.

CLOSING AS SOON AS 30 DAYS.

ZOE WOOD

519-589-4859

northside@granitehomes.ca

BUILT BY:

