

NORTHSIDE

GUELPH

2 BEDROOM FLOOR PLANS

Terrace Level

INTERIOR UNIT

NORTHSIDE

GUELPH

UNIT DETAILS

2 BEDROOM

2 BATHROOM

TERRACE

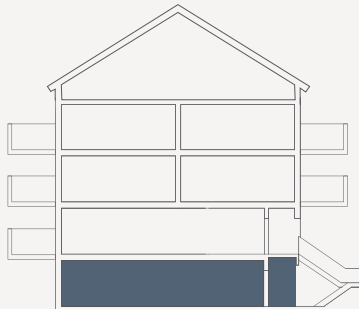
LIVING SPACE

INTERIOR 993 SQ. FT.

EXTERIOR 73 SQ. FT.

TOTAL 1,066 SQ. FT.

UNIT LOCATION



BLOCK A | B | C | D | E

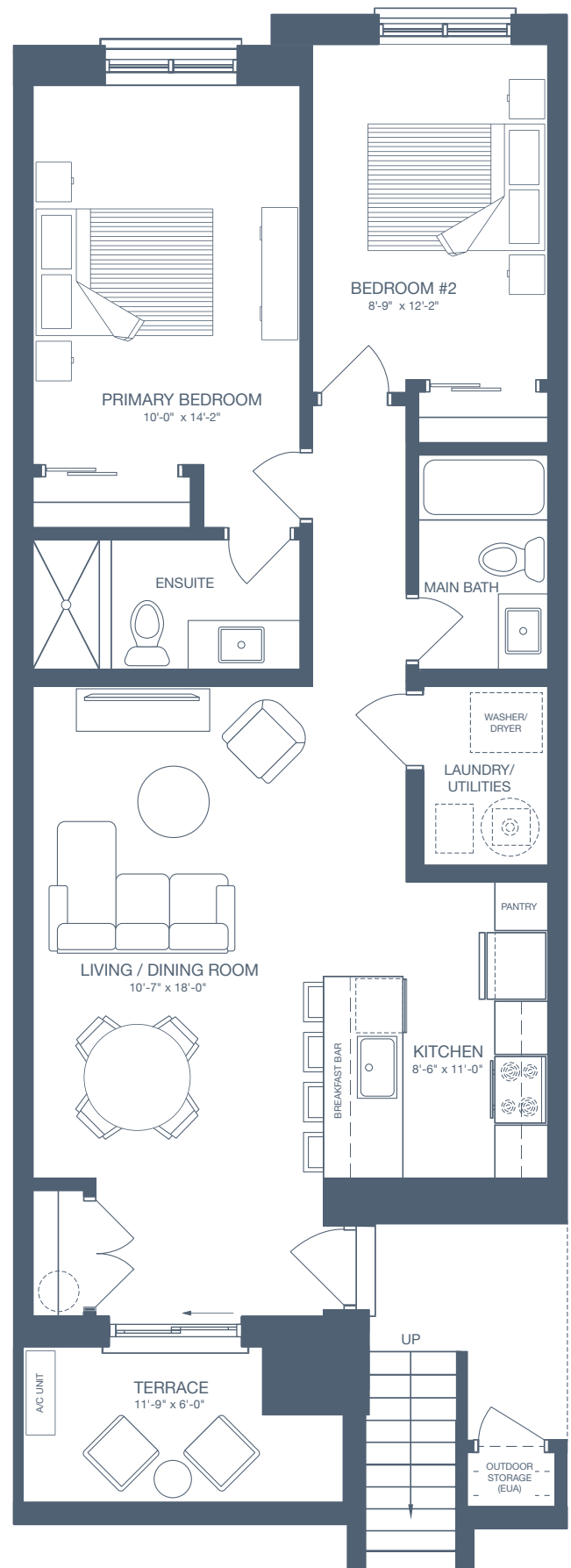


BLOCK F | G



All drawings are an artist's concept and may vary slightly from the final product. E. & O.E. Actual usable floor space may vary from stated area, and square footage has been calculated based on usable living space according to the Tarion rules. Drawings may show optional features which may not be included in the base price. Bulkheads and box outs may be required as chases for plumbing and mechanical. Location of mechanical room equipment will be located by the builder and may change based on plan. Number of steps in front entry may vary based on grade. March 2025.

GRANITEHOMES.CA



Main Level

INTERIOR UNIT

NORTHSIDE

GUELPH

UNIT DETAILS

2 BEDROOM

2 BATHROOM

BALCONY

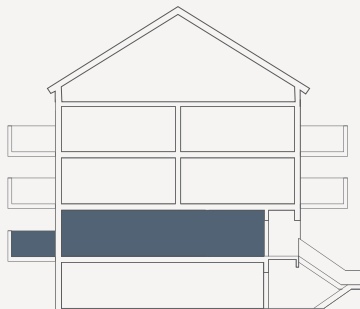
LIVING SPACE

INTERIOR 869 SQ. FT.

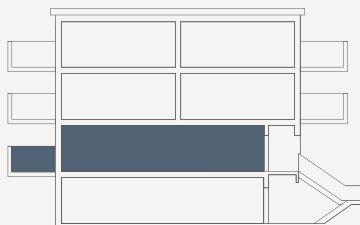
EXTERIOR 63 SQ. FT.

TOTAL 932 SQ. FT.

UNIT LOCATION



BLOCK A | B | C | D | E

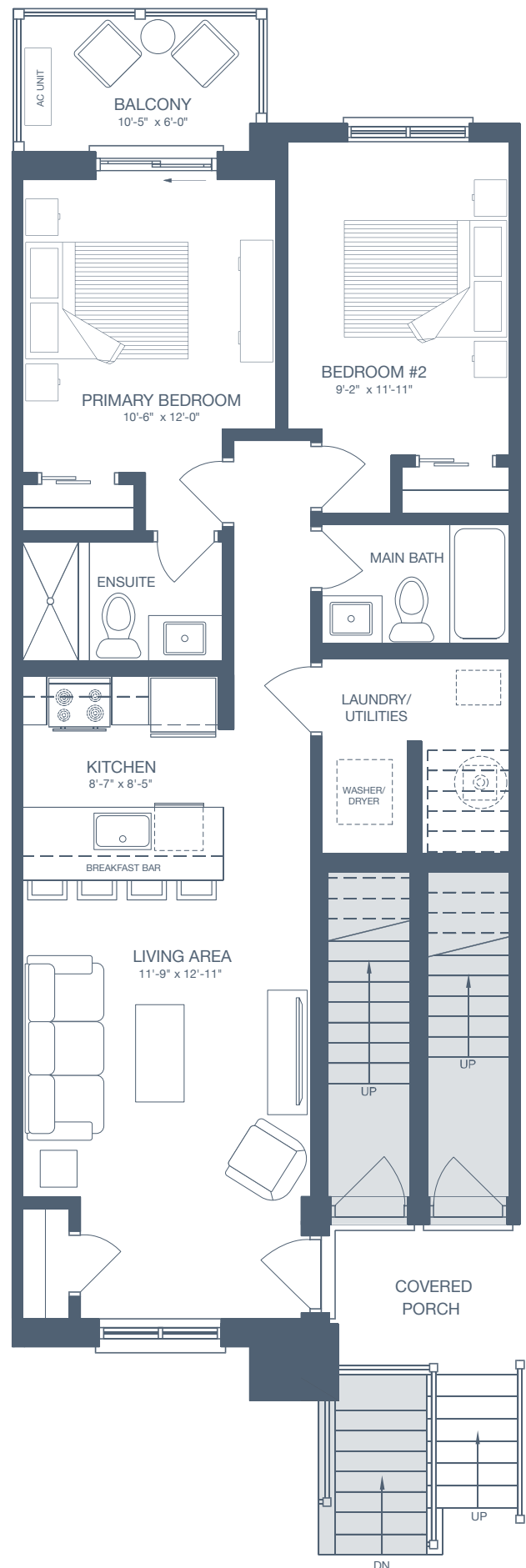


BLOCK F | G



All drawings are an artist's concept and may vary slightly from the final product. E. & O.E. Actual usable floor space may vary from stated area, and square footage has been calculated based on usable living space according to the Tarion rules. Drawings may show optional features which may not be included in the base price. Bulkheads and box outs may be required as chases for plumbing and mechanical. Location of mechanical room equipment will be located by the builder and may change based on plan. Number of steps in front entry may vary based on grade. March 2025.

GRANITEHOMES.CA



Front Two-Storey

INTERIOR UNIT

NORTHSIDE
GUELPH

UNIT DETAILS

2 BEDROOM

2 BATHROOM

2 BALCONIES

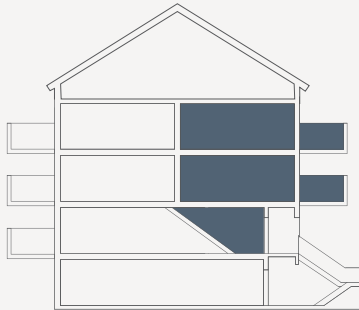
LIVING SPACE

INTERIOR 1,106 SQ. FT.

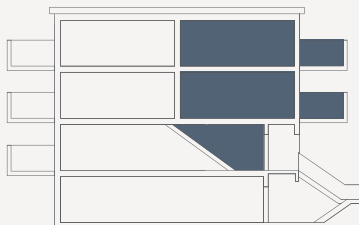
EXTERIOR 126 SQ. FT.

TOTAL 1,232 SQ. FT.

UNIT LOCATION



BLOCK A | B | C | D | E

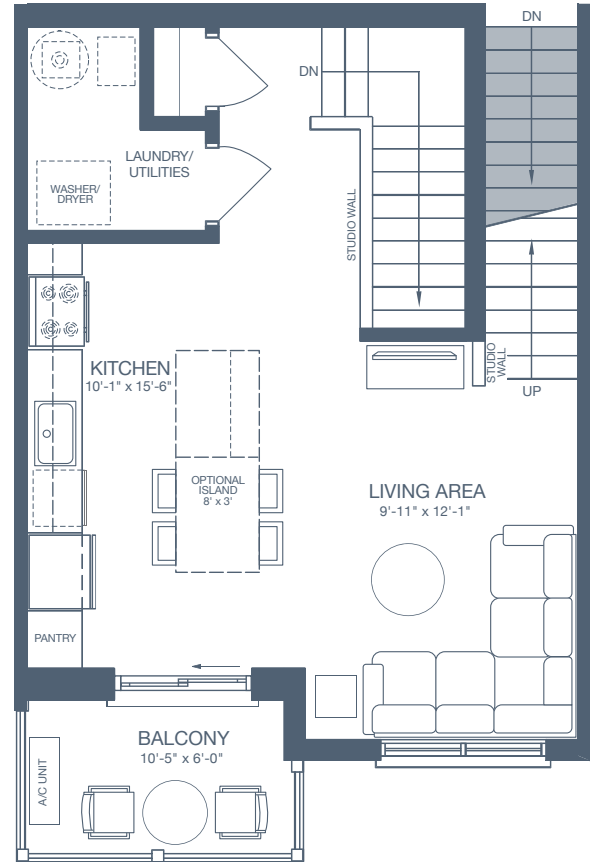


BLOCK F | G

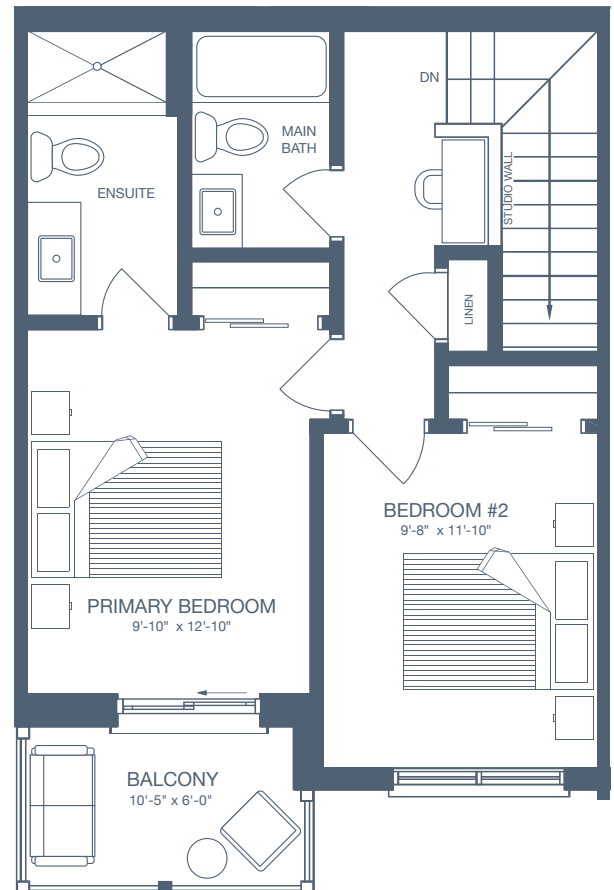


All drawings are an artist's concept and may vary slightly from the final product. E. & O.E. Actual usable floor space may vary from stated area, and square footage has been calculated based on usable living space according to the Tarion rules. Drawings may show optional features which may not be included in the base price. Bulkheads and box outs may be required as chases for plumbing and mechanical. Location of mechanical room equipment will be located by the builder and may change based on plan. Number of steps in front entry may vary based on grade. March 2025.

GRANITEHOMES.CA



SECOND LEVEL



THIRD LEVEL

Rear Two-Storey

INTERIOR UNIT

NORTHSIDE

GUELPH

UNIT DETAILS

2 BEDROOM

2 BATHROOM

2 BALCONIES

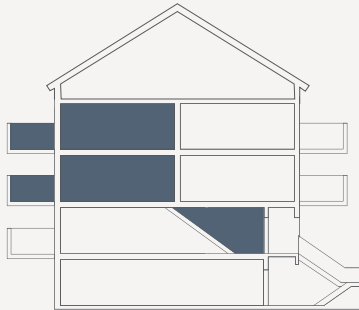
LIVING SPACE

INTERIOR 1,120 SQ. FT.

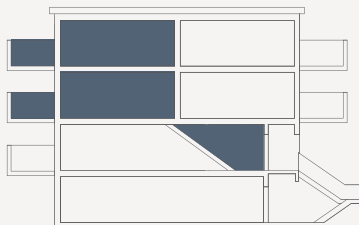
EXTERIOR 126 SQ. FT.

TOTAL 1,246 SQ. FT.

UNIT LOCATION



BLOCK A | B | C | D | E

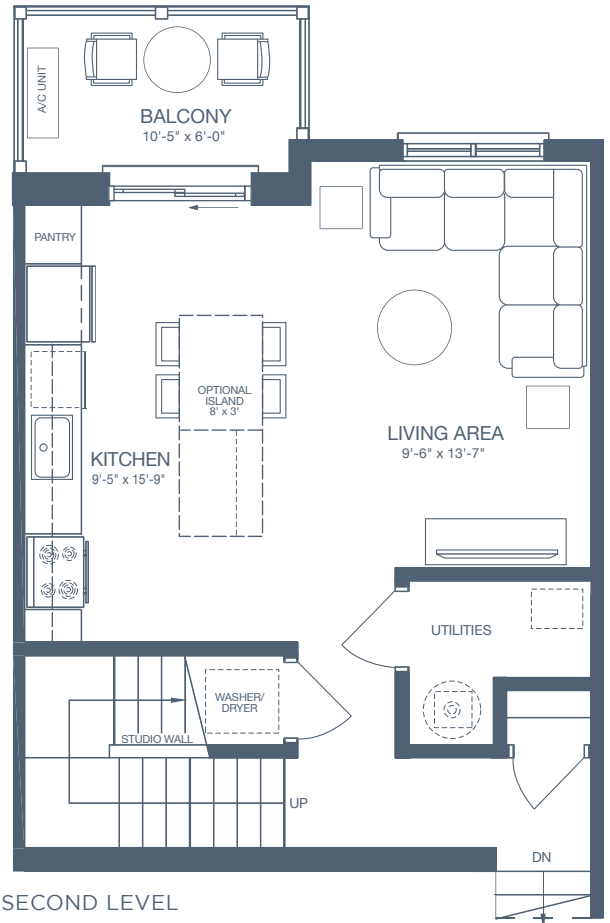


BLOCK F | G

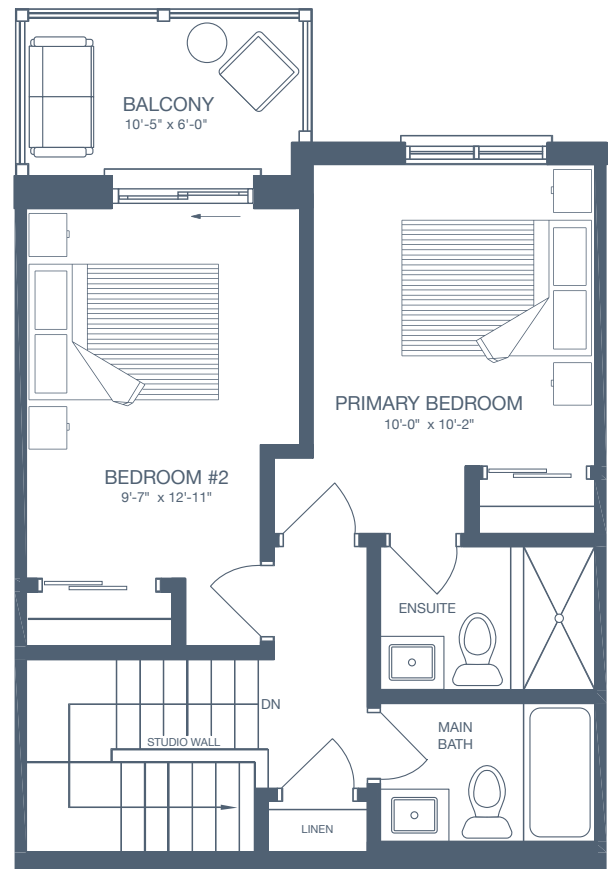


All drawings are an artist's concept and may vary slightly from the final product. E. & O.E. Actual usable floor space may vary from stated area, and square footage has been calculated based on usable living space according to the Tarion rules. Drawings may show optional features which may not be included in the base price. Bulkheads and box outs may be required as chases for plumbing and mechanical. Location of mechanical room equipment will be located by the builder and may change based on plan. Number of steps in front entry may vary based on grade. March 2025.

GRANITEHOMES.CA



SECOND LEVEL



THIRD LEVEL

Terrace Level B

END UNIT

NORTHSIDE

GUELPH

UNIT DETAILS

2 BEDROOM

2 BATHROOM

TERRACE

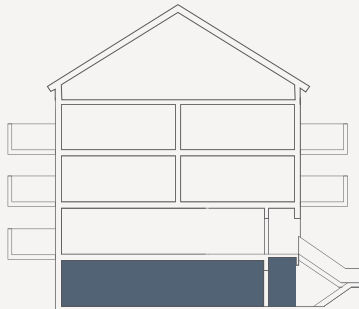
LIVING SPACE

INTERIOR 900 SQ. FT.

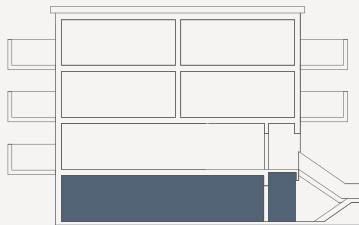
EXTERIOR 73 SQ. FT.

TOTAL 973 SQ. FT.

UNIT LOCATION



BLOCK A | B | C | D | E

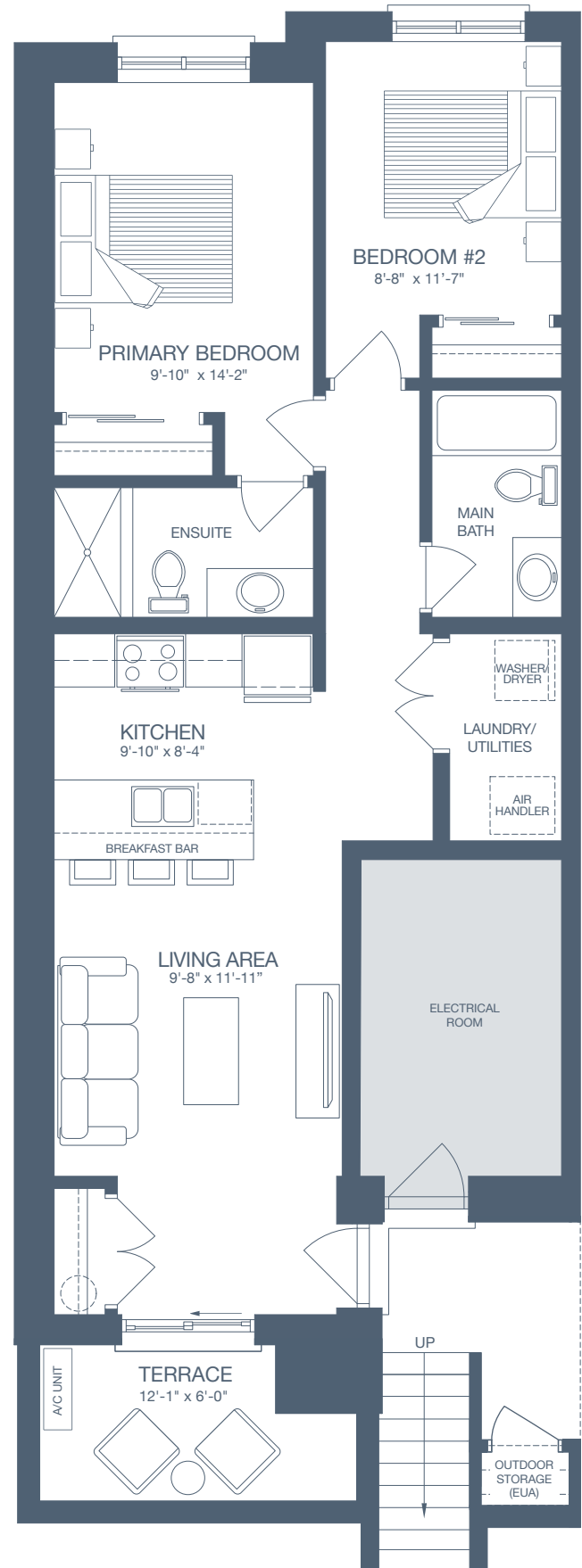


BLOCK F | G



All drawings are an artist's concept and may vary slightly from the final product. E. & O.E. Actual usable floor space may vary from stated area, and square footage has been calculated based on usable living space according to the Tarion rules. Drawings may show optional features which may not be included in the base price. Bulkheads and box outs may be required as chases for plumbing and mechanical. Location of mechanical room equipment will be located by the builder and may change based on plan. Number of steps in front entry may vary based on grade. March 2025.

GRANITEHOMES.CA



Main Level

END UNIT

NORTHSIDE

GUELPH

UNIT DETAILS

2 BEDROOM

2 BATHROOM

BALCONY

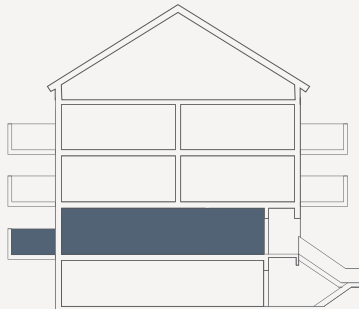
LIVING SPACE

INTERIOR 885 SQ. FT.

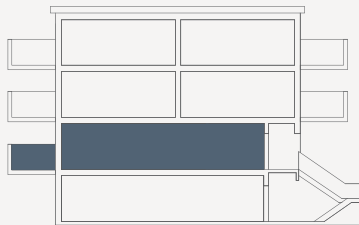
EXTERIOR 63 SQ. FT.

TOTAL 948 SQ. FT.

UNIT LOCATION



BLOCK A | B | C | D | E

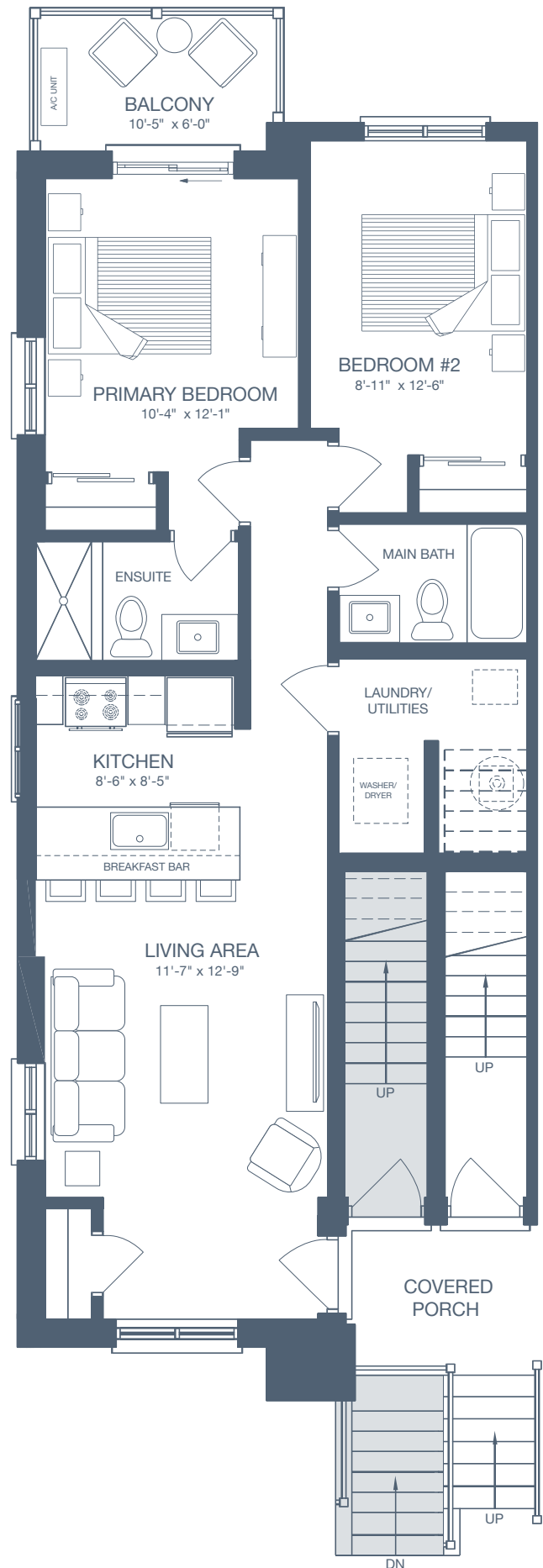


BLOCK F | G



All drawings are an artist's concept and may vary slightly from the final product. E. & O.E. Actual usable floor space may vary from stated area, and square footage has been calculated based on usable living space according to the Tarion rules. Drawings may show optional features which may not be included in the base price. Bulkheads and box outs may be required as chases for plumbing and mechanical. Location of mechanical room equipment will be located by the builder and may change based on plan. Number of steps in front entry may vary based on grade. March 2025.

GRANITEHOMES.CA



Front Two-Storey

END UNIT

NORTHSIDE

GUELPH

UNIT DETAILS

2 BEDROOM

2 BATHROOM

2 BALCONIES

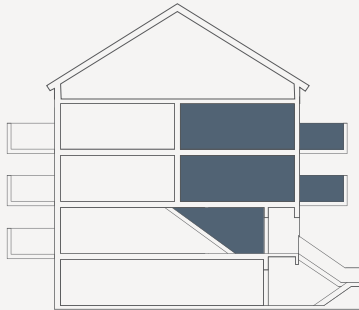
LIVING SPACE

INTERIOR 1,122 SQ. FT.

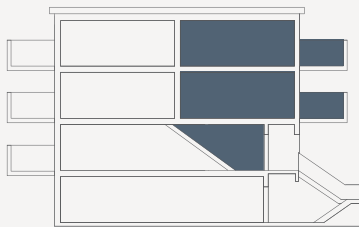
EXTERIOR 126 SQ. FT.

TOTAL 1,248 SQ. FT.

UNIT LOCATION



BLOCK A | B | C | D | E

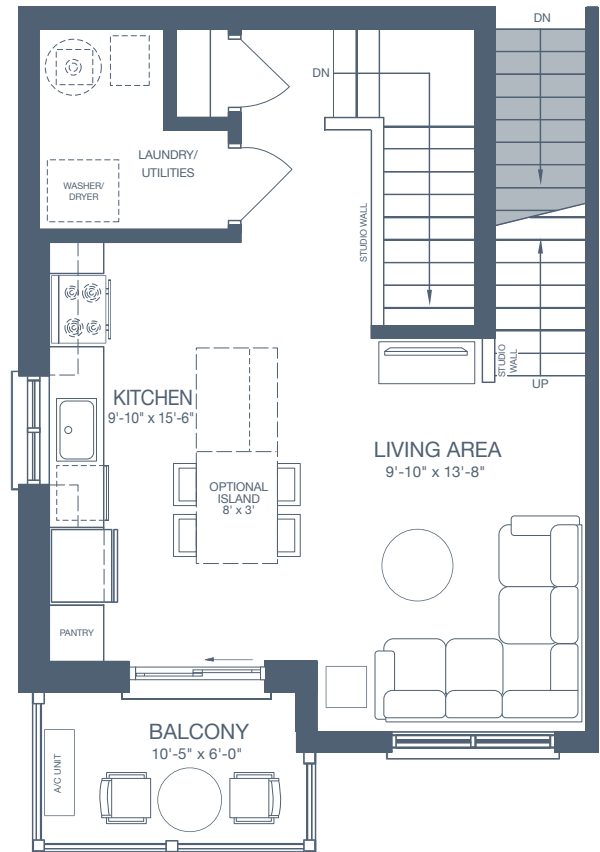


BLOCK F | G

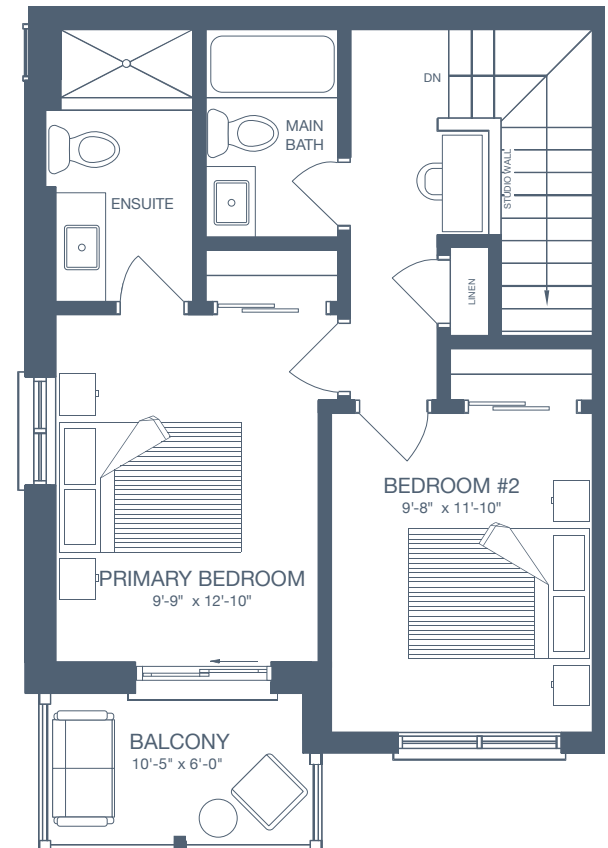


All drawings are an artist's concept and may vary slightly from the final product. E. & O.E. Actual usable floor space may vary from stated area, and square footage has been calculated based on usable living space according to the Tarion rules. Drawings may show optional features which may not be included in the base price. Bulkheads and box outs may be required as chases for plumbing and mechanical. Location of mechanical room equipment will be located by the builder and may change based on plan. Number of steps in front entry may vary based on grade. March 2025.

GRANITEHOMES.CA



SECOND LEVEL



THIRD LEVEL

Rear Two-Storey

END UNIT

NORTHSIDE

GUELPH

UNIT DETAILS

2 BEDROOM

2 BATHROOM

2 BALCONIES

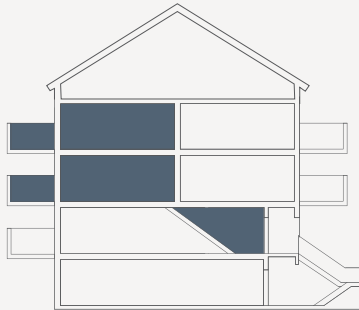
LIVING SPACE

INTERIOR 1,135 SQ. FT.

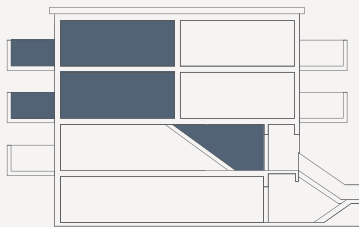
EXTERIOR 126 SQ. FT.

TOTAL 1,261 SQ. FT.

UNIT LOCATION



BLOCK A | B | C | D | E

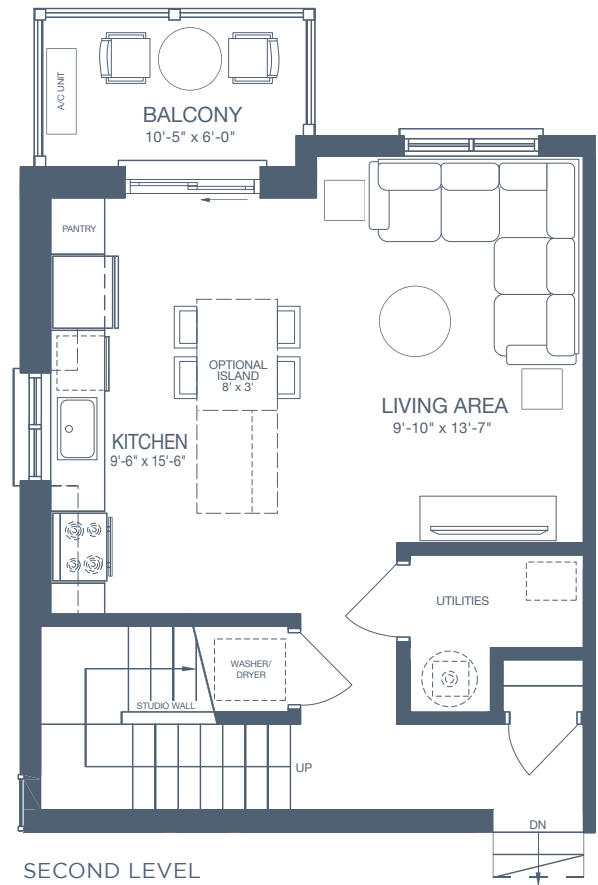


BLOCK F | G

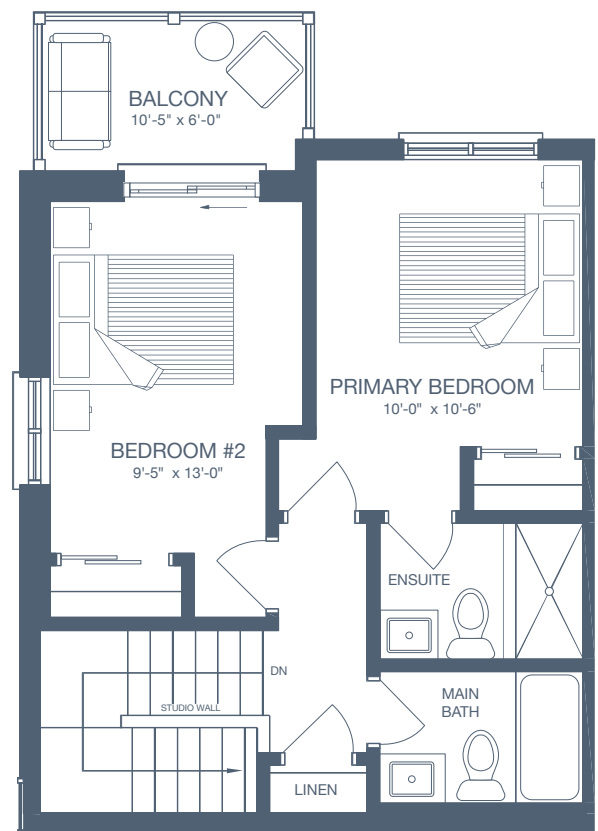


All drawings are an artist's concept and may vary slightly from the final product. E. & O.E. Actual usable floor space may vary from stated area, and square footage has been calculated based on usable living space according to the Tarion rules. Drawings may show optional features which may not be included in the base price. Bulkheads and box outs may be required as chases for plumbing and mechanical. Location of mechanical room equipment will be located by the builder and may change based on plan. Number of steps in front entry may vary based on grade. March 2025.

GRANITEHOMES.CA



SECOND LEVEL



THIRD LEVEL

Rear Two-Storey

ENHANCED END UNIT

NORTHSIDE

GUELPH

UNIT DETAILS

2 BEDROOM

2 BATHROOM

2 BALCONIES

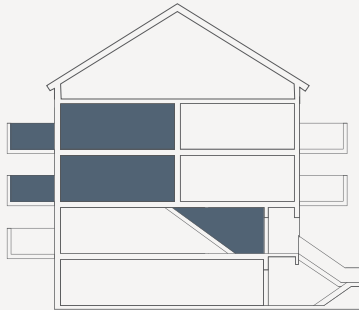
LIVING SPACE

INTERIOR 1,152 SQ. FT.

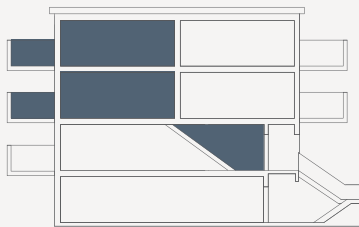
EXTERIOR 126 SQ. FT.

TOTAL 1,278 SQ. FT.

UNIT LOCATION



BLOCK A | B | C | D | E

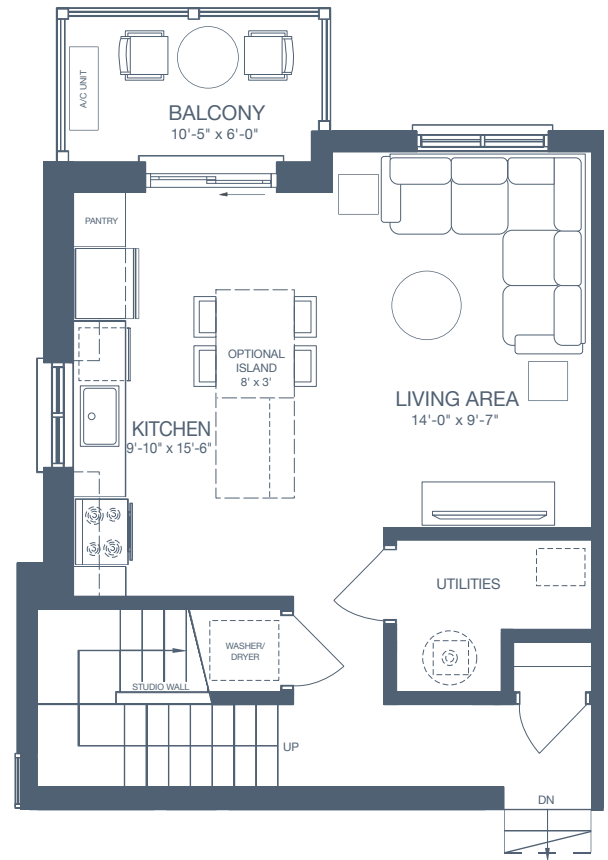


BLOCK F | G

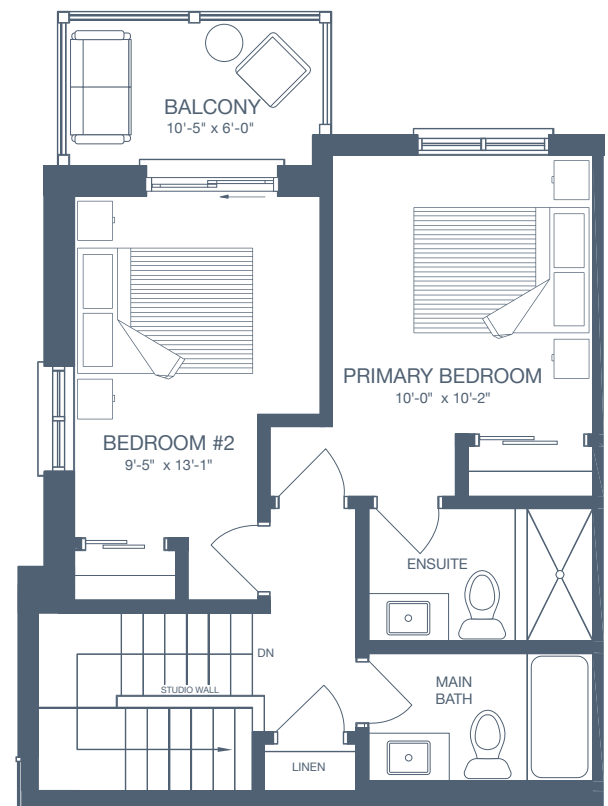


All drawings are an artist's concept and may vary slightly from the final product. E. & O.E. Actual usable floor space may vary from stated area, and square footage has been calculated based on usable living space according to the Tarion rules. Drawings may show optional features which may not be included in the base price. Bulkheads and box outs may be required as chases for plumbing and mechanical. Location of mechanical room equipment will be located by the builder and may change based on plan. Number of steps in front entry may vary based on grade. March 2025.

GRANITEHOMES.CA



SECOND LEVEL



THIRD LEVEL

NORTHSIDE

GUELPH

GRANITEHOMES.CA
NORTHSIDE@GRANITEHOMES.CA

