

NORTHSIDE

GUELPH

MOVE-IN READY STACKED TOWNHOME

UNIT F170

MAIN LEVEL - ENHANCED END

SQ. FT.
903

BEDROOMS
2

BATHROOMS
2



\$603,990

824 Woolwich St., Guelph

Main Level

ENHANCED END UNIT

NORTHSIDE

GUELPH

UNIT DETAILS

2 BEDROOM

2 BATHROOM

BALCONY

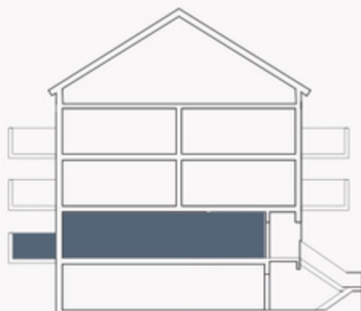
LIVING SPACE

INTERIOR 903 SQ. FT.

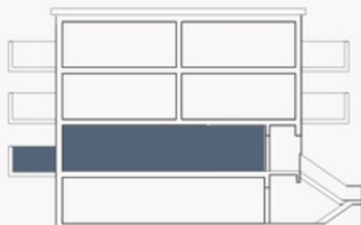
EXTERIOR 63 SQ. FT.

TOTAL 966 SQ. FT.

UNIT LOCATION



BLOCK A | B | C | D | E

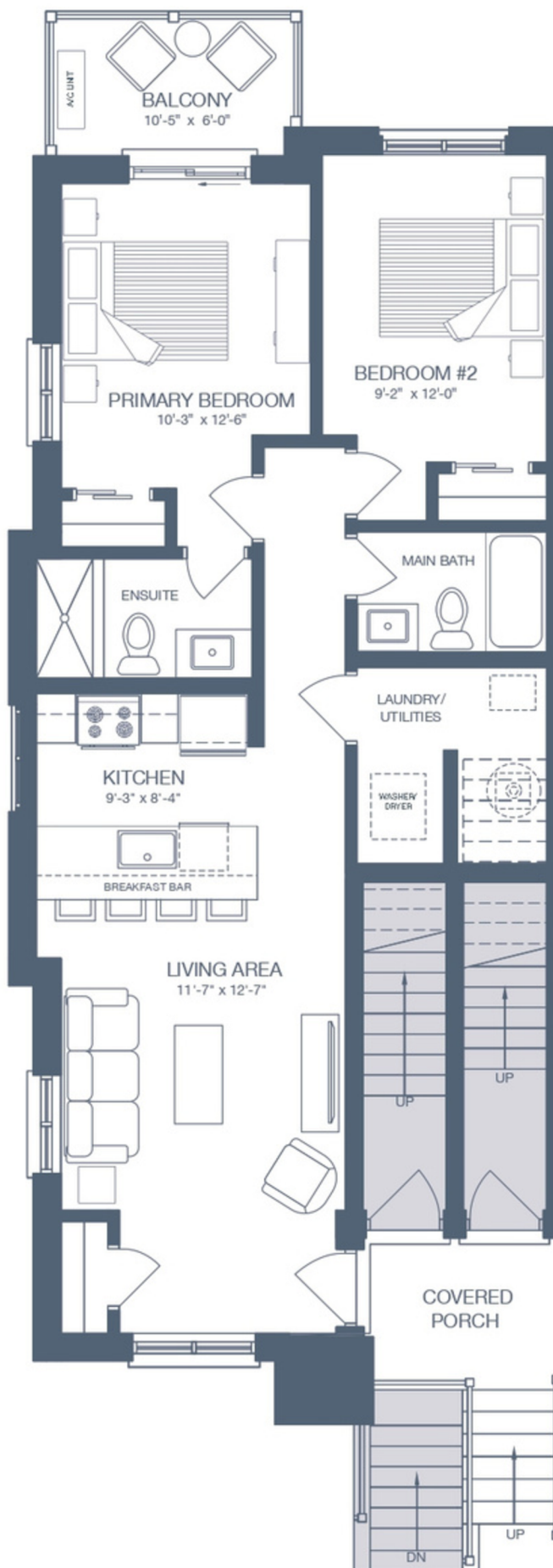


BLOCK F | G



All drawings are an artist's concept and may vary slightly from the final product. E. & O.E. Actual usable floor space may vary from stated area, and square footage has been calculated based on usable living space according to the Tarion rules. Drawings may show optional features which may not be included in the base price. Bulkheads and box outs may be required as chases for plumbing and mechanical. Location of mechanical room equipment will be located by the builder and may change based on plan. Number of steps in front entry may vary based on grade. March 2025.

GRANITEHOMES.CA



NORTHSIDE

GUELPH



BARK & IVORY INTERIOR PACKAGE

Premium Park Views
Extended Upper Cabinetry
Level 5 Quartz Countertops
Subway Tile Backsplash
Black Kitchen Faucet
Pendant Fixtures Over Peninsula

Northside Site Plan



Move-in ready homes provide the benefits of a new home, without the wait.

CLOSING AS SOON AS 30 DAYS.

ZOE WOOD

519-589-4859

northside@granitehomes.ca

BUILT BY:

