

46 Fieldstone Lane, Elora - Unit 15

SQ.FT. 1,604

Bedrooms:

3

Bathrooms:

2 Full + 1 Half



Interior Unit + Deck

\$780,990 ~~\$800,990~~

cash discount applied*

SOUTH  RIVER





SOUTH RIVER

ELORA ONTARIO

Limited-Time Promotion

QUICK-CLOSING UNITS IN BLOCK C

\$20,000 CASH DISCOUNT

+

2 YEARS FREE CONDO FEES

+

**5PC. KITCHEN & LAUNDRY
APPLIANCE PACKAGE**

(valued at \$6,550)

**TOTAL
SAVINGS OF
\$33,000**



Limited-time offer. Subject to change without notice. Applicable to Block C at Fieldstone II only.

Your Designer Home Awaits

MOVE-IN READY

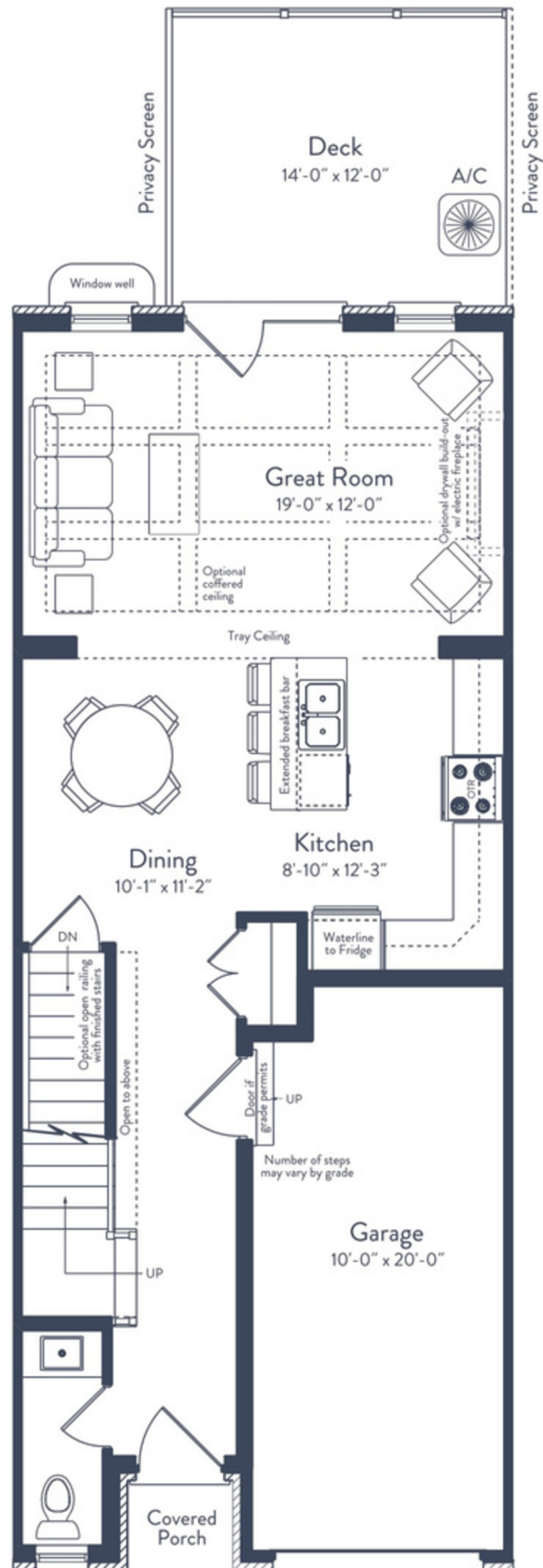
Expertly designed and curated by our Interior Design Team at Granite Homes, this home comes with the benefits of quick occupancy, a functional floor plan and premium features and finishes.



Features

MAIN FLOOR

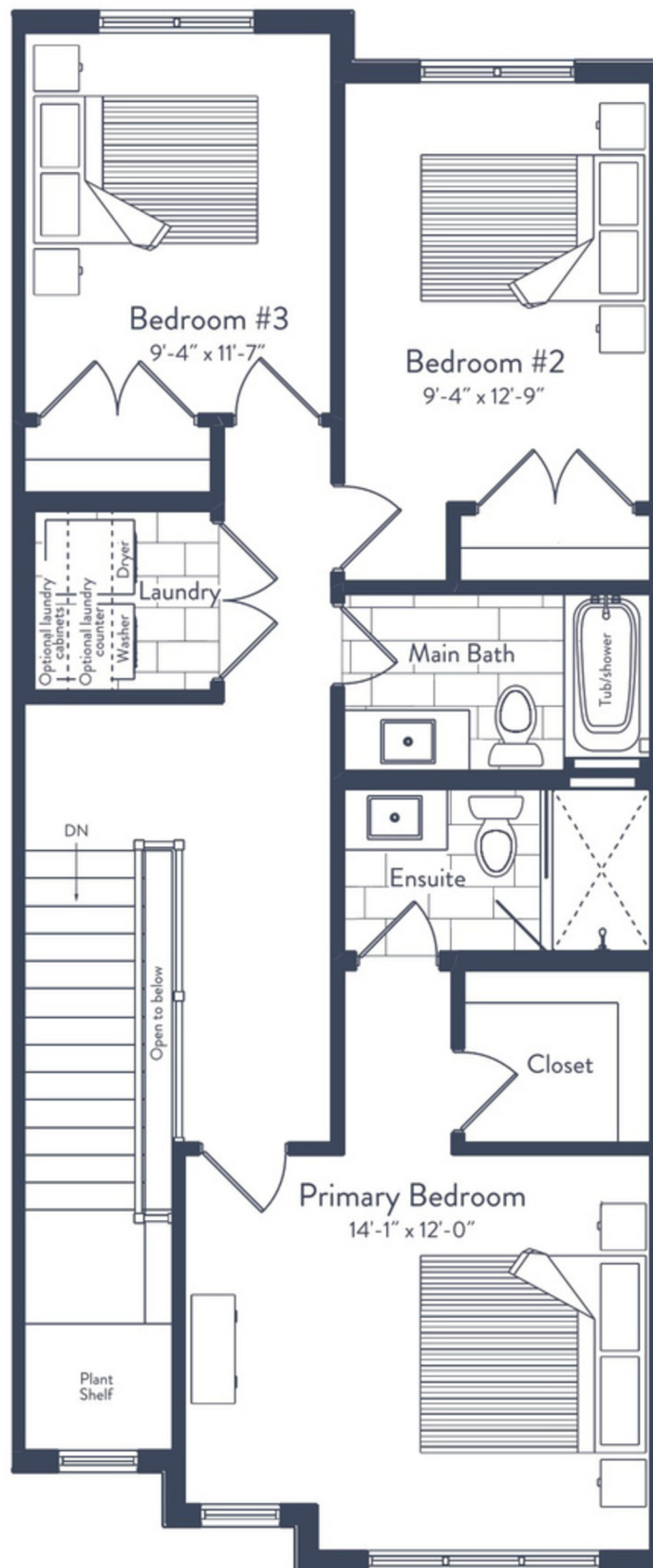
- 9' ceilings
- Luxury vinyl plank flooring throughout (including powder room)
- Pot lights
- Chef's kitchen including 18" pantry, pots and pans drawers, two bin garbage system, upgraded faucet, and upgraded countertops
- Concealed under cabinet lighting in kitchen
- Waffle ceiling in great room
- Garden doors off the great room
- Quartz countertops throughout



Features

SECOND FLOOR

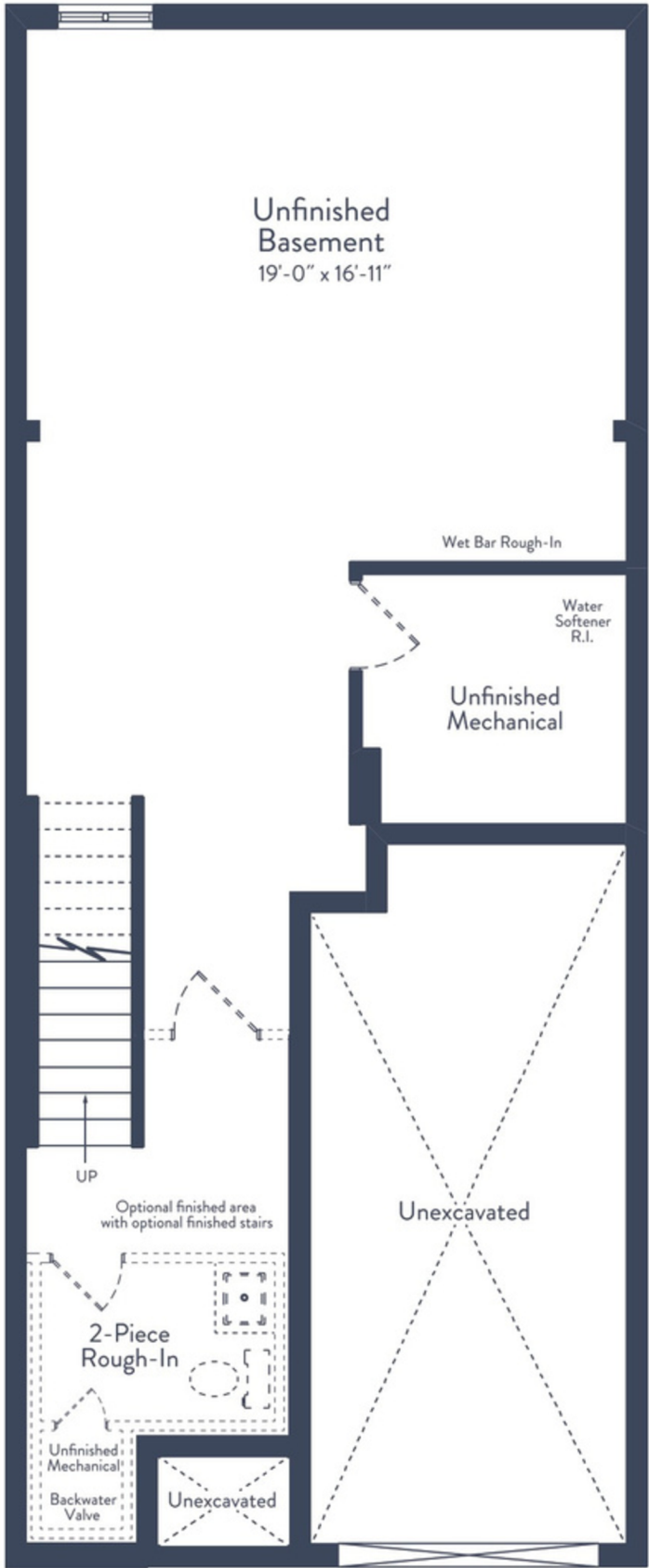
- High-quality low VOC carpet throughout hallway and bedrooms
- Railing with iron pickets
- Pot lights in hallway
- Quartz countertops in bathrooms
- Walk-in tiled shower with frameless glass door and tiled niche in ensuite
- Acrylic bathtub with acrylic skirt, tiled surround, and shampoo niche in main bathroom



Features

BASEMENT

- Unfinished basement



Fieldstone II Site Plan



Designer Homes provide the benefits of a new home, without the wait.

DEPOSIT:

5% due on firming.

CONDO FEE:

Estimated \$272*.

*Included in Condo Fees:

- Exterior maintenance of homes included to ensure long-term aesthetically pleasing streetscape
- Common areas maintained by professional landscaping company
- Snow removal and maintenance of private laneway, visitor parking spaces and sidewalk
- Private garbage collection
- Professional property management and administration
- Exterior lighting operated and maintained by Condominium Corporation

CLOSING:

As soon as 30 days.

SANDRA AVEIRO | New Home Sales Representative
sales@granitehomes.ca | 519.222.3988

Base house prices include all sales taxes (HST). Rebate signed back to builder on closing. Prices and promotions are subject to change without notice. Please see Sales Professional for details. E. & O. E. Prices effective Nov 21, 2025.

