

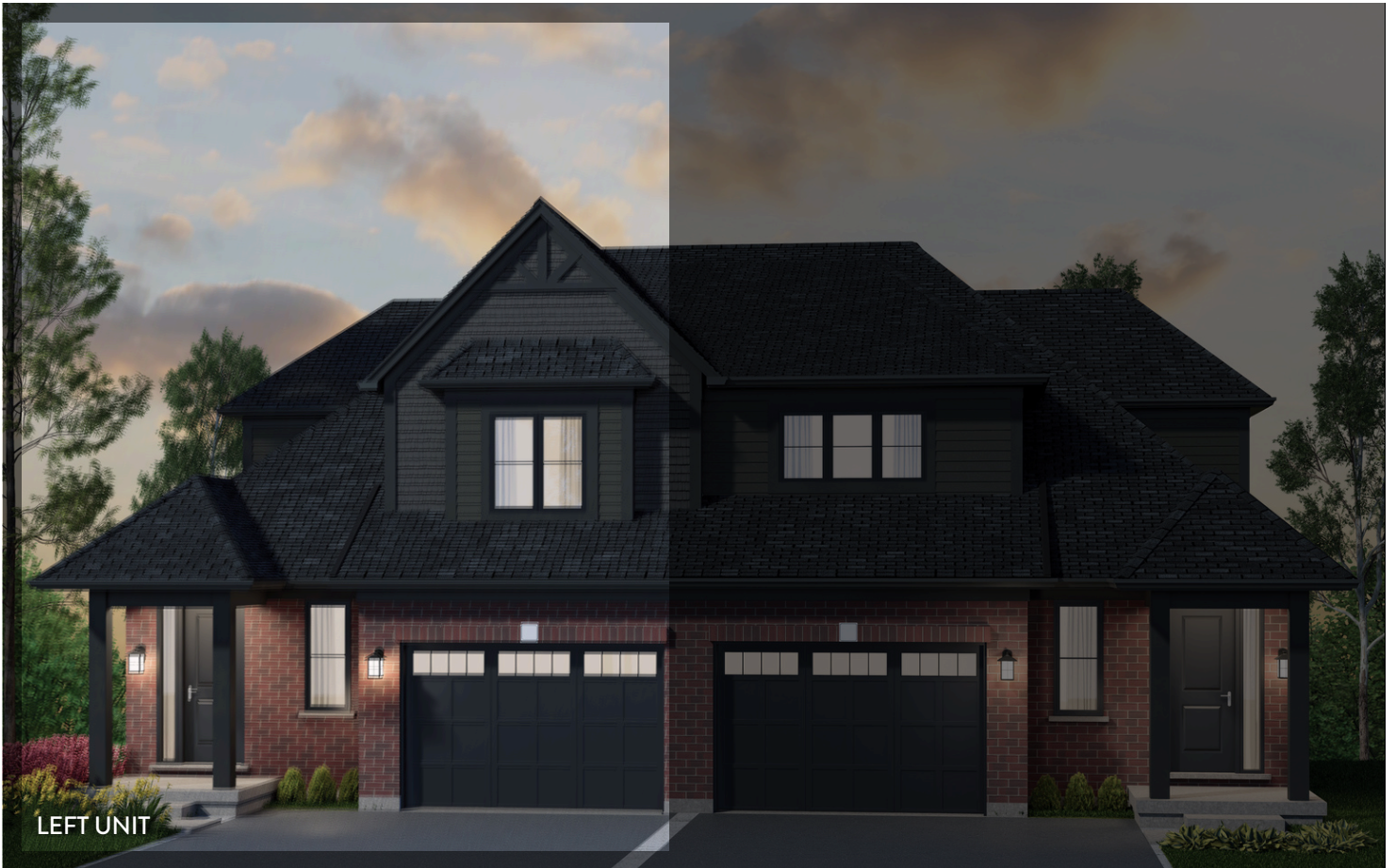


**SOUTH RIVER**  
BUNGALOFT COLLECTION

UNIT 17

**THE VICTORIA**

2,149 SQ. FT.



FRONT ELEVATION

New Home Sales Representatives  
sales@granitehomes.ca

**SANDRA AVEIRO**  
519.222.3988

**SANDRA CHIARELLI**  
519.835.2887

All drawings and renderings are an artist's concept and may vary slightly from the final product. E. & O.E.





SOUTH RIVER  
BUNGALOF COLLECTION

# THE VICTORIA

UNIT 17

2,149 SQ. FT.



3 BEDS



2.5 BATHS



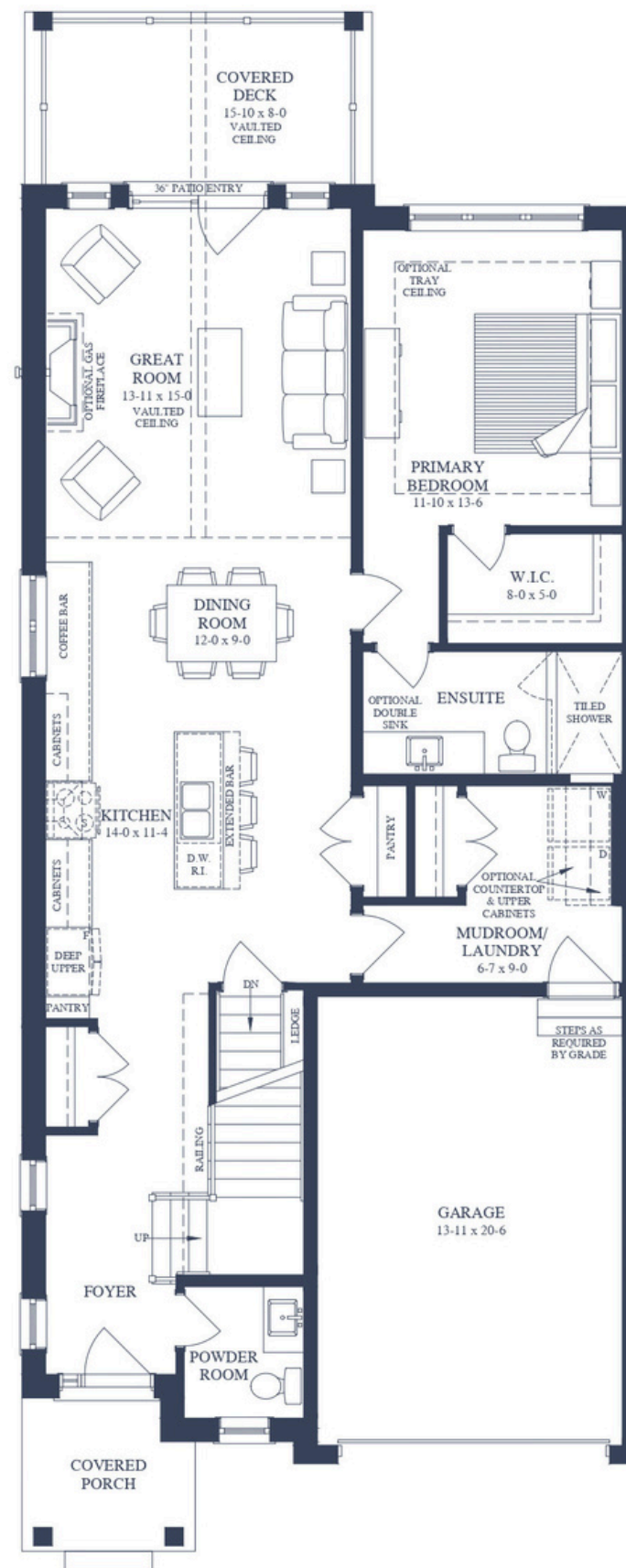
1.5 CARS



granitehomes.ca

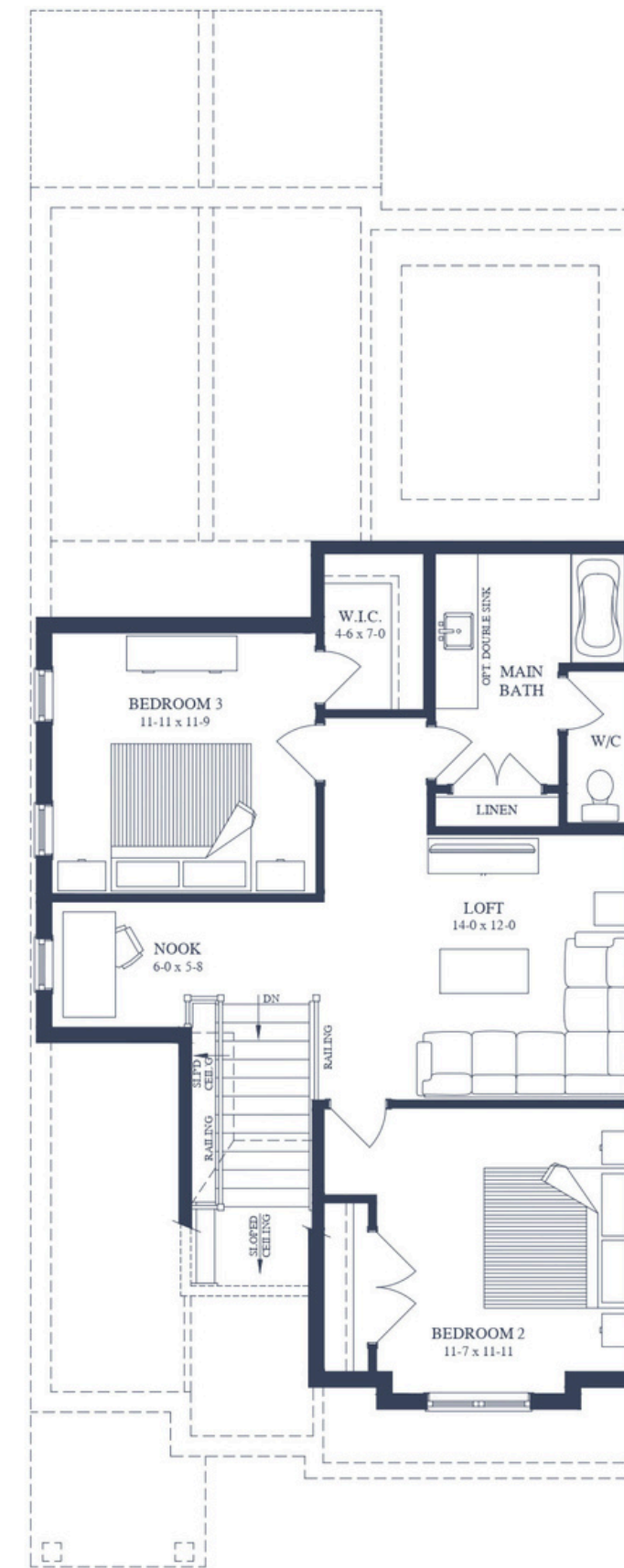
## MAIN FLOOR

1273 Sq. Ft.



## SECOND FLOOR

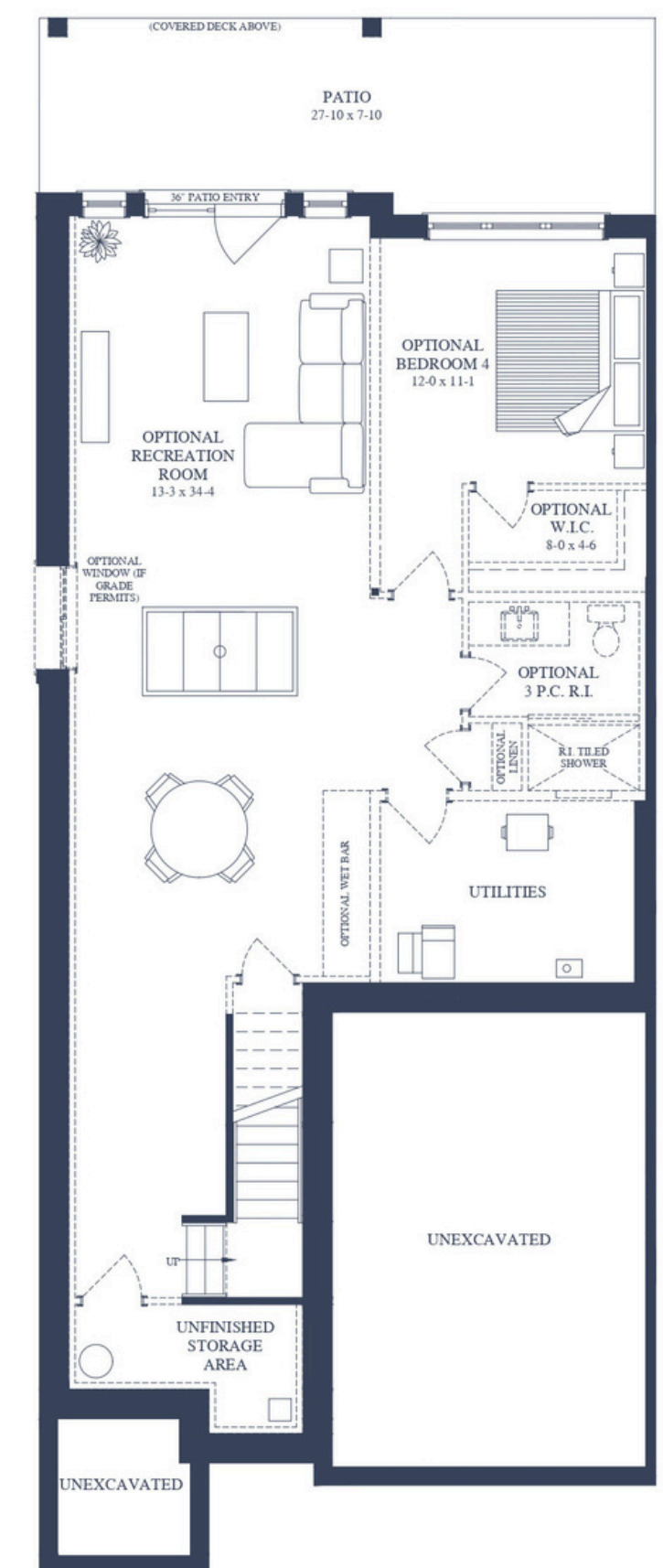
876 Sq. Ft.



## BASEMENT

1073 Sq. Ft.

Optional Finished Basement





## SOUTH RIVER

BUNGALOFT COLLECTION

### SANDRA AVEIRO

New Home Sales Representative

519.222.3988

### SANDRA CHIARELLI

New Home Sales Representative

519.835.2887

[sales@granitehomes.ca](mailto:sales@granitehomes.ca)



All drawings and renderings are an artist's concept and may vary slightly from the final product. E. & O.E. Actual usable floor space may vary from stated area, and square footage has been calculated based on usable living space according to the Tarion rules. Drawings may show optional features which may not be included in the base price. Bulkheads and box outs may be required as chases for plumbing and mechanical. Location of mechanical room equipment will be located by the builder and may change based on plan. Garage man door location may vary, subject to grade. Number of steps in front entry, rear entry (if applicable), and garage entry may vary based on grade. Actual finishes may differ from what is shown in rendering. v1.0 - Dec 2025